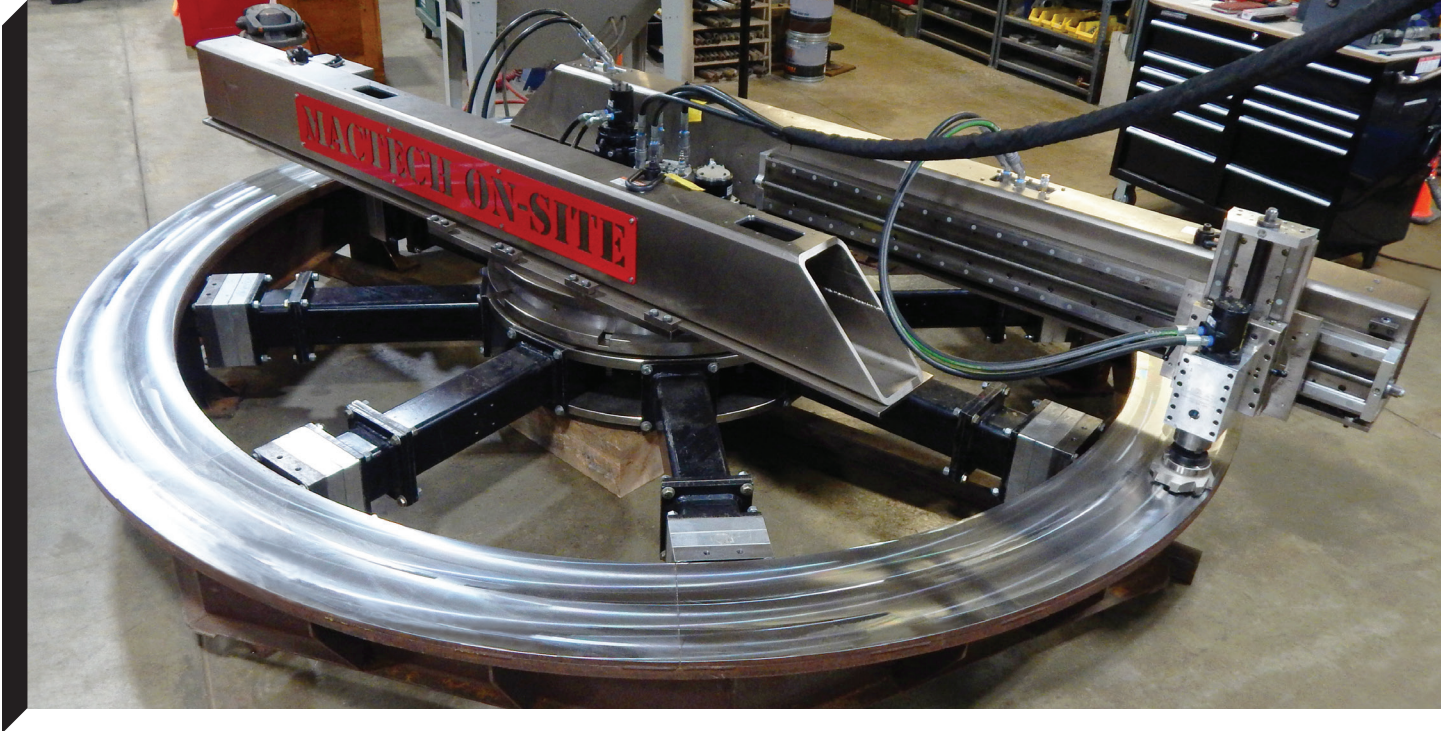


MACTECH

LDFM LARGE DIAMETER FACING MACHINE

MACTECHONSITE.COM



PRODUCT DESCRIPTION

The Mactech LDFM is engineered for precision single-point turning and rotary milling of large-diameter flanges, delivering high-quality surface finishes in even the most demanding field conditions.

The central rotary hub adjusts independently from the mounting legs, allowing for precise alignment during setup. The rigid tubular beam design reduces vibration allowing the LDFM to produce precision grooves, high quality faces, and surface finishing. Our segmented leg design allows for flexibility in the range of interior diameters that the LDFM can be mounted within.

The Mactech LDFM with its multiple setup options and modular components makes it absolutely excel in complex facing applications across the industry.

FEATURES

- ADJUSTABLE ROTARY HUB INDEPENDENT OF MOUNTING
- MILLING AND SINGLE POINT TOOLING OPTIONS
- ELECTRIC FEED OPTION WITH TOUCH SCREEN CONTROLS
- RIGID TUBULAR BEAMS FOR REDUCED VIBRATION

MILLING



SINGLE POINT



MACTECH INC.
4079 PEPIN AVE UNIT 4
RED WING MN 55066
800-328-1488
INFO@MACTECHONSITE.COM

MACTECH OFFSHORE
302 IDA ROAD
BROUSSARD LA 70518
337-839-2793
INFO@MACTECHOFFSHORE.COM

MACTECH KENTUCKY
3880 INDUSTRIAL DRIVE
PADUCAH KY 42001
270-442-1559
INFO@MACTECHONSITE.COM

MACTECH WISCONSIN
2515 CLEVELAND AVE
MARINETTE WI 54143
800-328-1488
INFO@MACTECHONSITE.COM

MACTECH INTERNATIONAL
CONTACT US FROM ANYWHERE
AROUND THE WORLD
651-388-7117
INFO@MACTECHONSITE.COM

WORK HARD

WORK SAFE

WE BEFORE ME

WELCOME CHALLENGES

WOW THEM

MACTECH

LDFM LARGE DIAMETER FACING MACHINE

MACTECHONSITE.COM

TECHNICAL DIMENSIONS • 10' BEAM

| | |
|-------------------------------------|--|
| Interior Mounting Diameter | MIN: 55" (1397mm) - MAX: 185" (4699mm) |
| Cutting Range: Milling Centerline | MIN: 55" (1397mm) - MAX: 195" (4953mm) - (MAX with Extension Bracket: 219"/5569mm) |
| Cutting Range: Single Point Turning | MIN: 55" (1397mm) - MAX: 204" (5182mm) - (MAX with Extension Bracket 224"/5689mm) |
| X & Y Axis Travel | X-Axis: 59.5" / 511mm - Z-Axis: 7" / 177mm |

TECHNICAL DIMENSIONS • 5-1/2' BEAM

| | |
|-------------------------------------|--|
| Interior Mounting Diameter | MIN: 55" (1397mm) - MAX: 122.5" (3111mm) |
| Cutting Range: Milling Centerline | MIN: 55" (1397mm) - MAX: 137" (3478mm) |
| Cutting Range: Single Point Tooling | MIN: 55" (1397mm) - MAX: 127" (3235mm) |
| X & Y Axis Travel | X-Axis: 18.625" / 473mm - Z-Axis: 7" / 177mm |

| WEIGHTS | WEIGHT | SHIPPING CRATE DIMENSIONS |
|-----------------|---|---------------------------|
| Central Hub | 3500lbs / 1587kg | 4100lbs 50"x50"x44" |
| 10' Beams (2) | 2000lbs / 907kg (1000lbs / 453kg ea.) | 3035lbs 123"x48"x26" |
| 5-1/2' Beam (1) | 600lbs / 272kg | 1752lbs 87"x51"x31" |
| Legs (All) | 2000lbs / 907kg (combined leg segments) | 2585lbs 78"x33"x35" |

| DRIVE MOTOR AND POWER DETAILS | DRIVE MOTOR | RPM | POWER REQUIREMENT |
|---|--|----------------------------------|--------------------------------|
| Milling Package w/ Hyd. Rotation | 5.9 in ³ Hydraulic Drive Motor w/ Planetary Reducer | .03rpm @ 15gpm | 16gpm @ 1800 psi |
| Milling Electric Pkg. w/ Elec. Rotation | 1.5 kW w/ Planetary Reducer | .001 - 1.5rpm | 480 VAC, 3 Phase, 60Hz, 30 Amp |
| Milling Package Spindle Motor | 3.6 in ³ Hydraulic drive motor | 380-760rpm @ 6-12gpm | 16gpm @ 1800 psi |
| Single Point Package Hyd. Rotation | 22.8 in ³ Hydraulic Drive Motor | 15rpm | 16gpm @ 1800 psi |
| Single Point Package Air Feed | Adjustable Air Tripper | .003" - .02" Feed Per Revolution | 90 psi |



All dimensions and hydraulic requirements are for reference and may be subject to change without notice. Machine performance is subject to application and operator capability; please discuss your requirements directly with a Mactech sales representative. All information given and all sales made by Mactech Inc. are subject to their terms and conditions.

WORK HARD

WORK SAFE

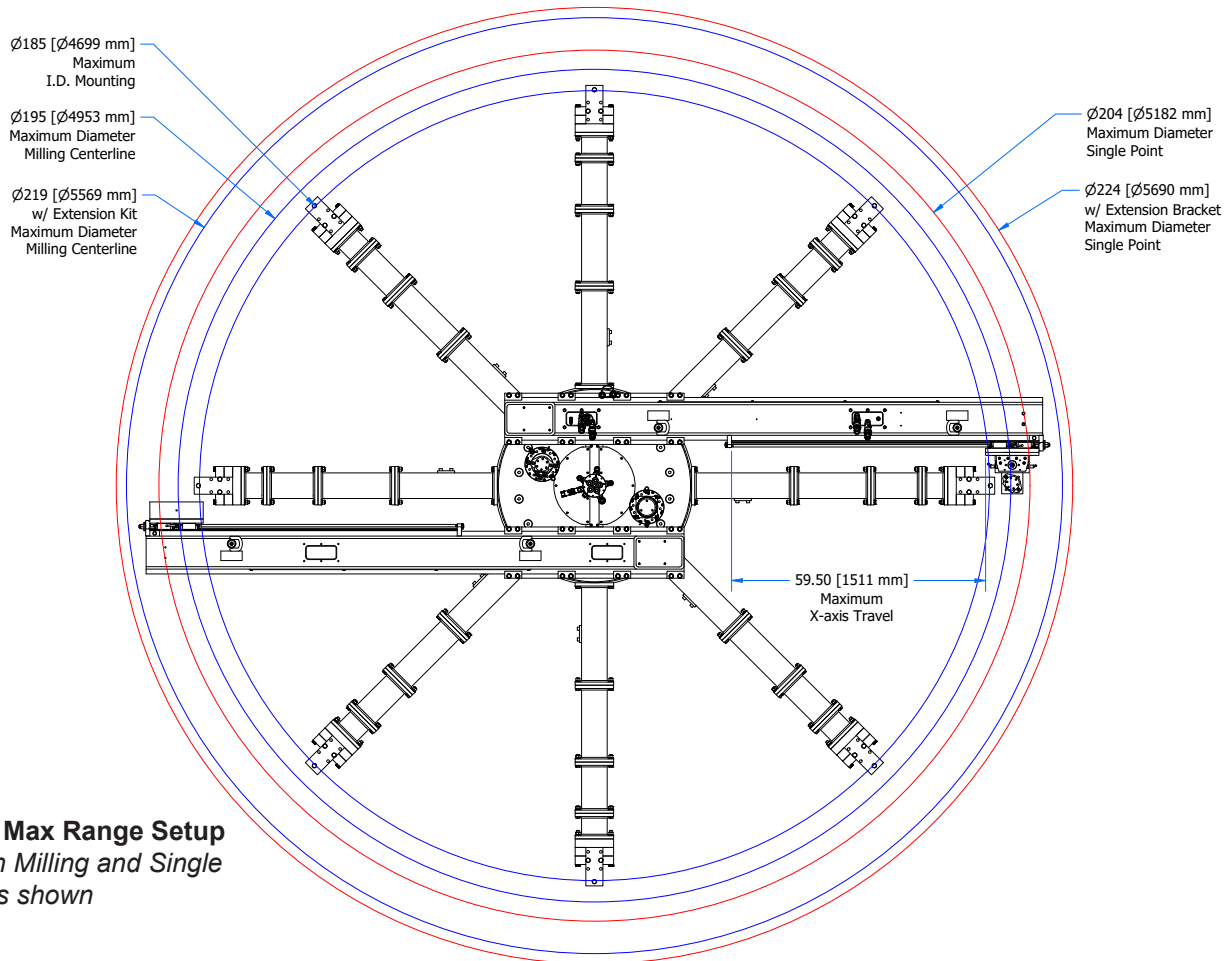
WE BEFORE ME

WELCOME CHALLENGES

WOW THEM

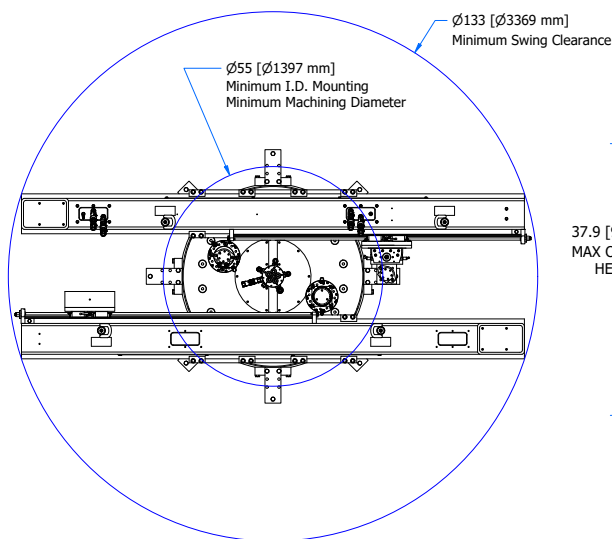
OPERATIONAL DIMENSIONS

605-6871, 605-6740, 605-6875 - 10' Beams / Leg Packages

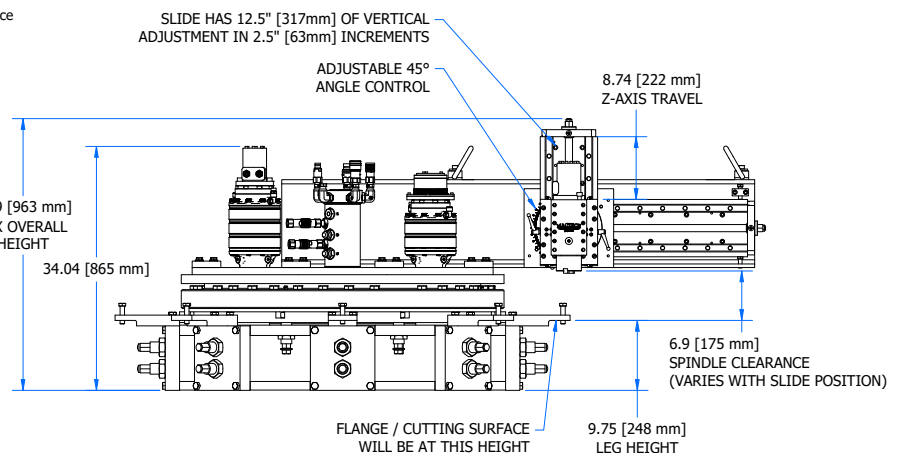


10' Beam Max Range Setup

Note: Both Milling and Single Point Dims shown



10' Beam Min. Range Setup



Machine Heights

Note: Applies to both 10' and 5.5' Beams

All dimensions and hydraulic requirements are for reference and may be subject to change without notice. Machine performance is subject to application and operator capability; please discuss your requirements directly with a Mactech sales representative. All information given and all sales made by Mactech Inc. are subject to their terms and conditions.

WORK HARD

WORK SAFE

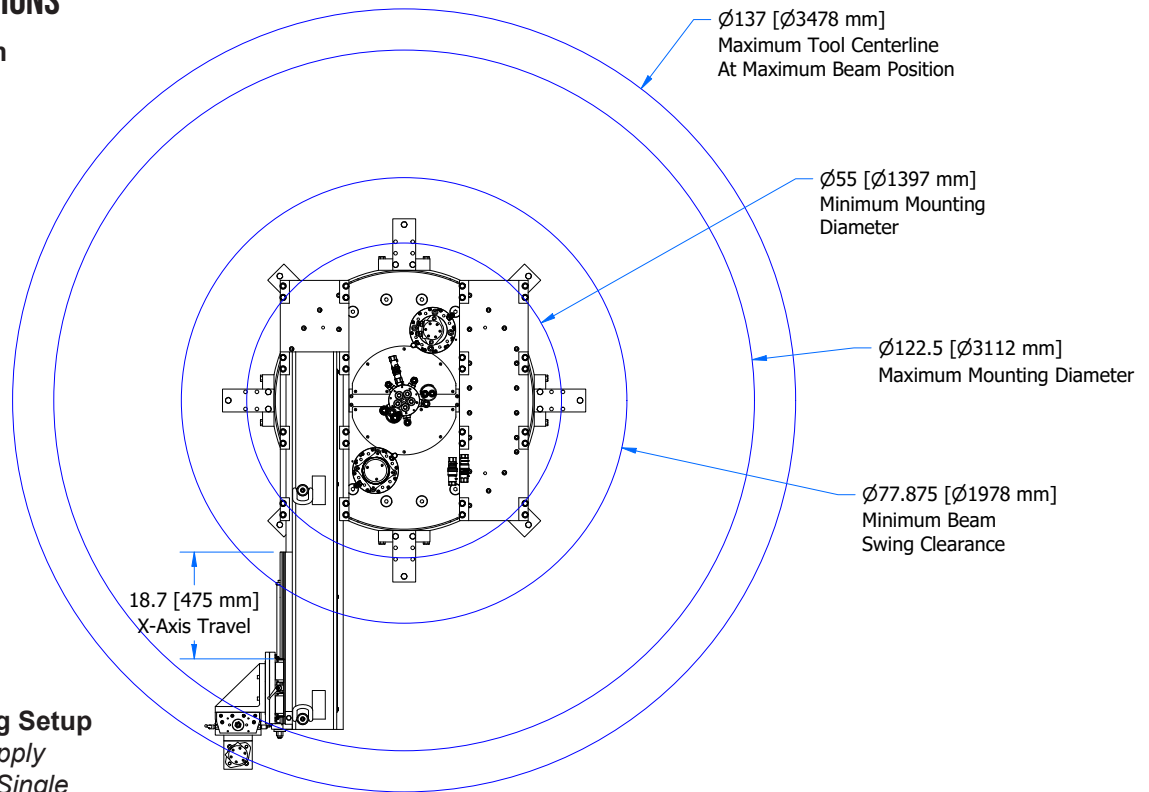
WE BEFORE ME

WELCOME CHALLENGES

WOW THEM

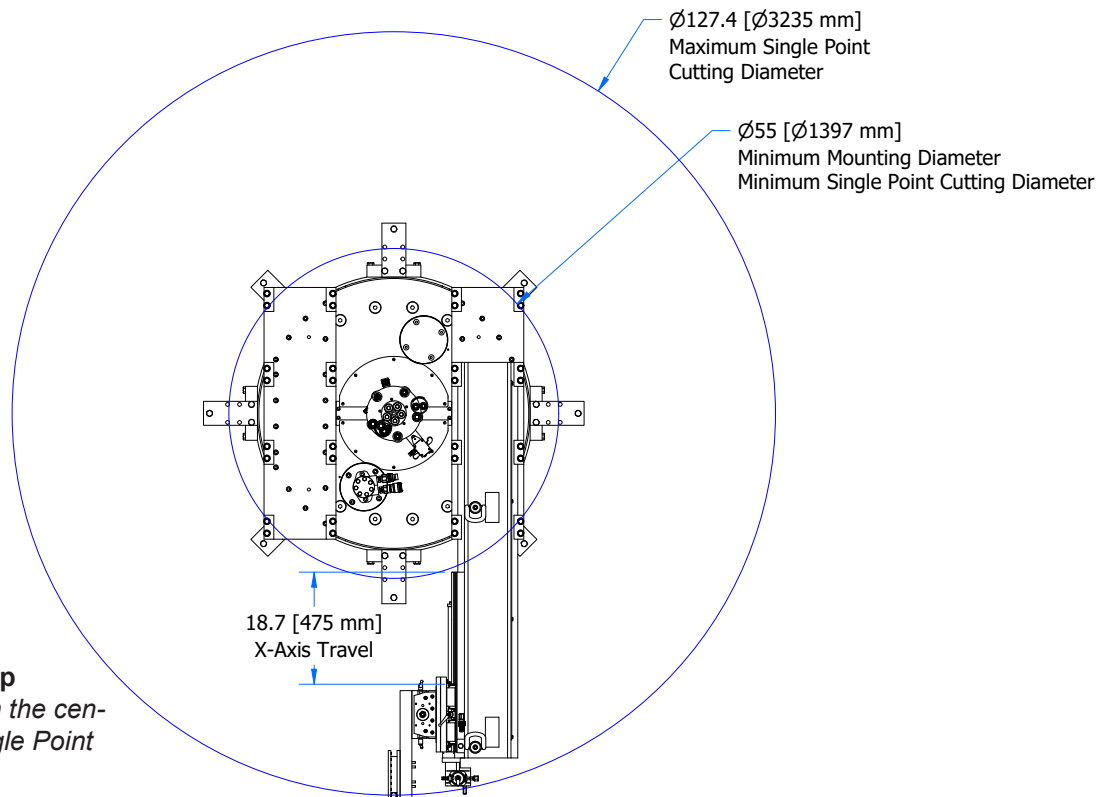
OPERATIONAL DIMENSIONS

605-7033 - 5-1/2' Beam



5-1/2' Beam Machining Setup

Note: Mounting Dims apply to both Machining and Single Point Setups



5-1/2' Single Point Setup

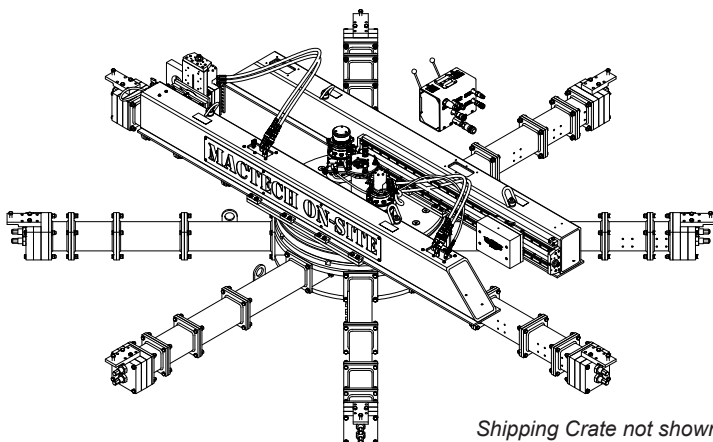
Note: Tooling must be on the centerline of the hub for Single Point (as shown)

All dimensions and hydraulic requirements are for reference and may be subject to change without notice. Machine performance is subject to application and operator capability; please discuss your requirements directly with a Mactech sales representative. All information given and all sales made by Mactech Inc. are subject to their terms and conditions.

LDFM — MILLING + SINGLE POINT PACKAGE

605-6871

Contains: LDFM - Milling and Single Point with 10ft Beam and 10ft Leg Set, 5.9ci Hyd. Drive, LDFM Spares Kit, LDFM Hand Tools Kit, Setup and Operation Manual, Drawing Package, Shipping Crate

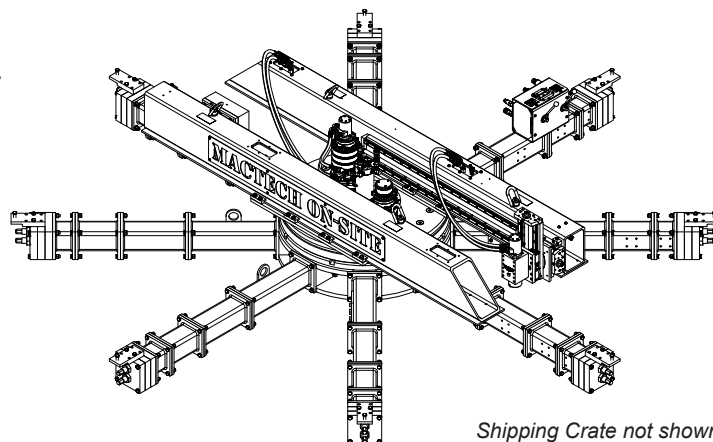


Shipping Crate not shown

LDFM — MILLING PACKAGE

605-6740

Contains: LDFM - Milling with 10ft Beam and 10ft Leg Set, 5.9ci Hyd. Drive, LDFM Spares Kit, LDFM Hand Tools Kit, Setup and Operation Manual, Drawing Package, Shipping Crate

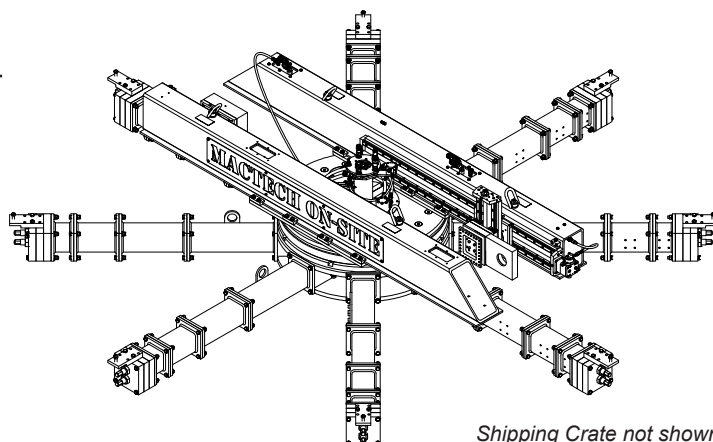


Shipping Crate not shown

LDFM — SINGLE POINT PACKAGE

605-6875

Contains: LDFM - Single Point with 10ft Beam and 10ft Leg Set, Extended Swivel Tool Holder Mounting Base, 22.8ci Hyd. Drive, LDFM Spares Kit, LDFM Hand Tools Kit, Setup and Operation Manual, Drawing Package, Shipping Crate

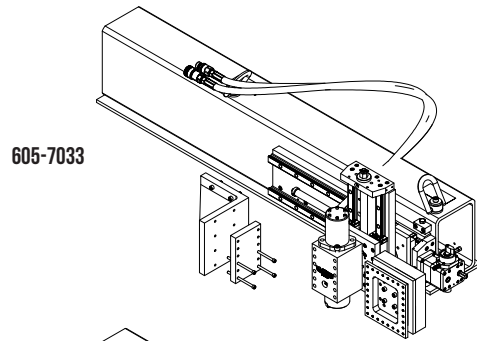


Shipping Crate not shown

All dimensions and hydraulic requirements are for reference and may be subject to change without notice. Machine performance is subject to application and operator capability; please discuss your requirements directly with a Mactech sales representative. All information given and all sales made by Mactech Inc. are subject to their terms and conditions.

LDFM 5 1/2' BEAM MILLING/SINGLE POINT PACKAGE

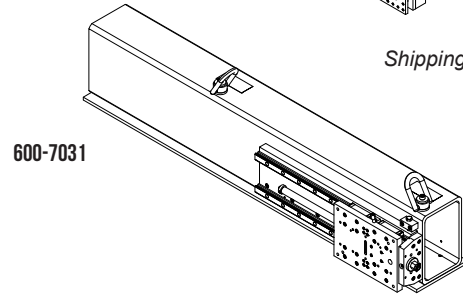
605-7033 Contains: LDFM 5 1/2' Beam Milling/
Single Point configurations, Extension Kit,
3.6ci Hyd. Drive w/ 65" Hose, Shipping
Crate



605-7033

LDFM 5 1/2' BEAM W/ SLIDE

600-7031 Contains: LDFM 5 1/2' Beam with slide but
without milling or single point components



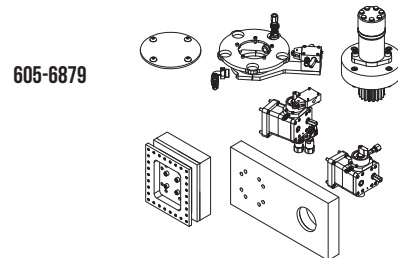
600-7031

Shipping Crate not shown

LDFM SINGLE POINT CONVERSION KIT

All components needed to upgrade 600-6740 to 600-6871

605-6879 Contains: LDFM Single Point Tool Holder
Assy, LDFM Single Point Drive Assy,
LDFM Air Feed Box Assy, LDFM Air Feed
Switch Assy, 1/2 to 3/4 Hydraulic Flush
Face Fitting Adapter Set, Spares Kit



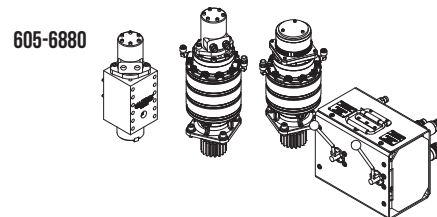
605-6879

Included Hoses and Hardware Not Shown

LDFM MILLING CONVERSION KIT

All components needed to upgrade 600-6875 to 600-6871

605-6880 Contains: Extended ND6 Mill Head
Assembly -NMTB-40 Quill, SAI LDFM
Mag Brake Assembly, SAI LDFM Milling
Hyd Drive Assembly, LDFM Hydraulic
Control Valve Assembly, LDFM Milling
Rotation Hose Assembly, Spares Kit



605-6880

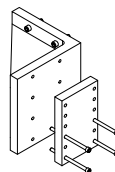
Included Hoses and Hardware Not Shown

LDFM MILLING HEAD EXTENSION KIT

Increases max machining diameter capability, allows machine to mill at a greater diameter than swing clearance diameter of beam

600-6877 Contains: LDFM Milling Head Angle Bracket, Extended ND6 Mill Head Spacer Plate

600-6877

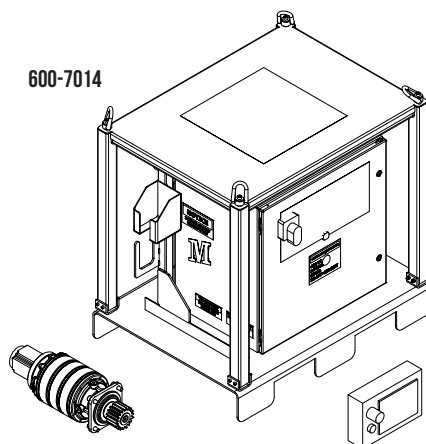


LDFM MILLING SERVO ELECTRIC DRIVE PACKAGE

Servo drive to rotate machine with digital controller

600-7014 Contains: Electric Drive Assembly - 1.5 KW Servo, LDFM Milling Servo Drive Assembly, Electrical Cabinet, Touch Screen Controller

600-7014

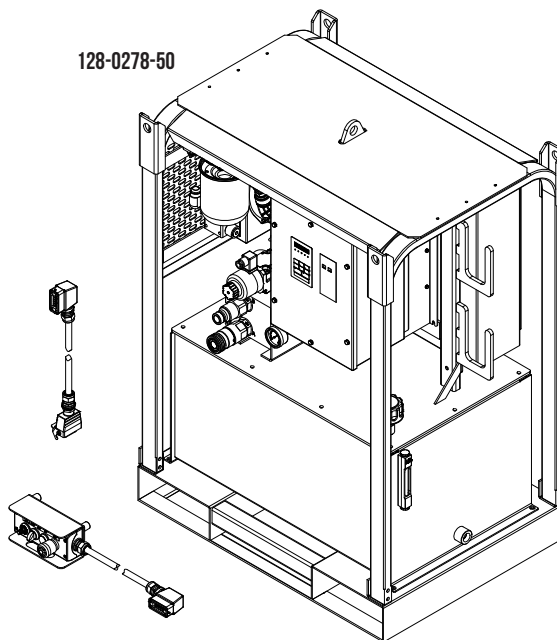


HYDRAULIC POWER SUPPLY

30 Gallon Reservoir (AW 32), Pendant w/ 12' cord, 50' extension cord, 25' power cord, 2000 PSI factory set, 3-18 GPM

128-0278 HYDRAULIC POWER SUPPLY - 20HP VFD 480V, SUBMERSIBLE

128-0278-50

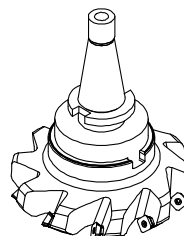


All dimensions and hydraulic requirements are for reference and may be subject to change without notice. Machine performance is subject to application and operator capability; please discuss your requirements directly with a Mactech sales representative. All information given and all sales made by Mactech Inc. are subject to their terms and conditions.

MILLING TOOLING OPTIONS

Includes: Shell mill, tool holder, inserts, draw bolt.

| | |
|-----------------|--|
| 445-1108 | 4" 5 Flt 45° Face Mill Nmtb 40 Taper Shank Kit |
| 445-1107 | 5" 6 Flt 45° Face Mill Nmtb 40 Taper Shank Kit |
| 445-1078 | 6" 10 FLT 45° Face Mill With NMTB #40 |



445-1078

TOOLING AND INSERT OPTIONS

Available Cutters, Face Mills, and Tool Holders

| | |
|-----------------|---|
| 445-2012 | INSERT - CCMT32.52 ESU, AC530U (Finishing) |
| 445-2013 | Face Mill Insert SEMT13T3AGSR-G ACP200 General Purpose Steel (Roughing) |
| 445-2014 | Face Mill Insert SEET13T33AGSR-L ACP100 Light Cutting Steel (Roughing) |
| 445-2019 | Face Mill Insert SEET13T3AGFR-L H1 Aluminum (Roughing) |



445-2014

SINGLE POINT TOOLING OPTIONS

Insert Holders

| | |
|-----------------|--|
| 445-8522 | 1" Rnd Shank, LH 8" Length, Positive CCMT, -5 Deg Lead (Finishing) |
| 445-8523 | 1" Rnd Shank, RH 8" Length, Positive CCMT, -5 Deg Lead (Finishing) |
| 445-1079 | 1" Rnd Shank, LH 12" Length, Negative CNMG, -5 Deg Lead (Roughing) |
| 445-1080 | 1" Rnd Shank, RH 12" Length, Negative CNMG, -5 Deg Lead (Roughing) |



445-8522

SINGLE POINT TOOLING INSERTS

| | |
|-----------------|---|
| 445-1109 | CNMG432-M5 TP2501 MED STEEL (Roughing) |
| 445-1110 | CNMG432-MR7 TP2501 ROUGHING STEEL (Roughing) |
| 445-2012 | INSERT - CCMT32.52 ESU, AC530U (Roughing and Finishing) |



445-1109

Other material bits have same form factor

All dimensions and hydraulic requirements are for reference and may be subject to change without notice. Machine performance is subject to application and operator capability; please discuss your requirements directly with a Mactech sales representative. All information given and all sales made by Mactech Inc. are subject to their terms and conditions.