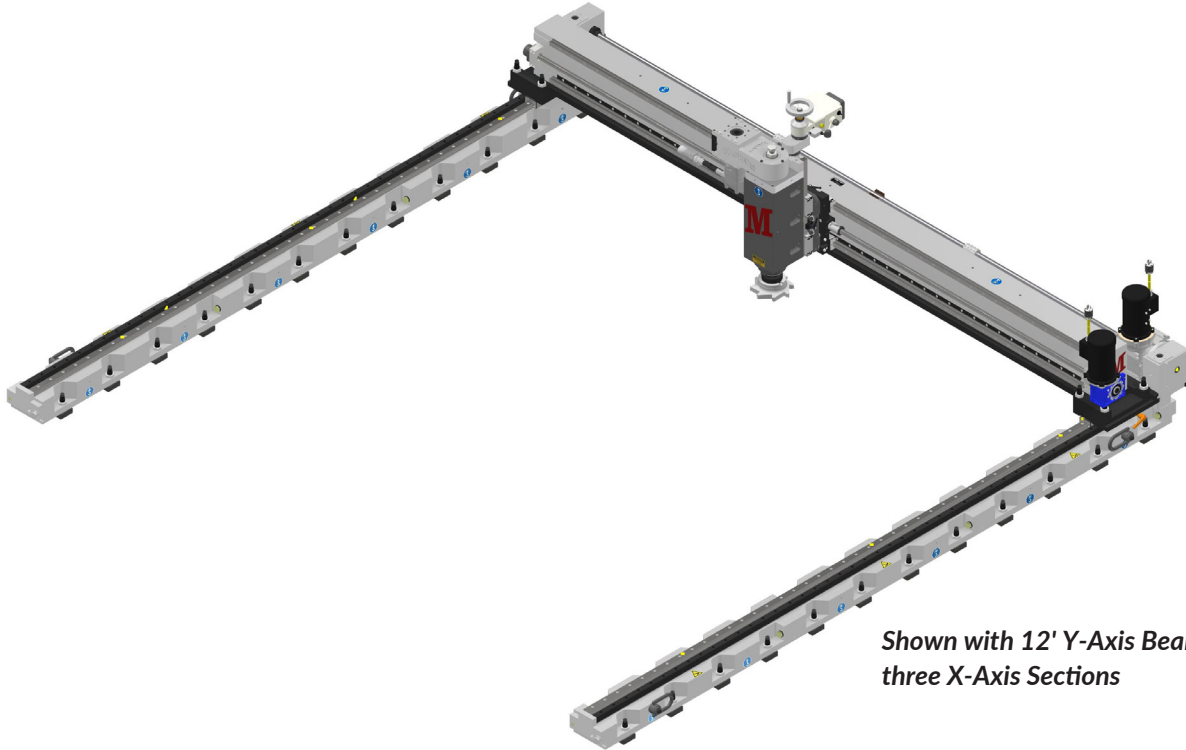


# MACTECH

# PGMM-HD

PORTABLE GANTRY MILLING MACHINE - HEAVY DUTY

[MACTECHONSITE.COM](http://MACTECHONSITE.COM)



*Shown with 12' Y-Axis Beam and three X-Axis Sections*

## PRODUCT DESCRIPTION

Save costly shop repairs with accurate, on-site milling, drilling and machining with an expandable X-axis reach. Adding or removing sections provides versatility to meet the demands of multiple varied setups. A powerful hydraulic drive motor makes smooth, clean and efficient cuts.

Mactech offers a fast response with the best technicians and support, short delivery times, high accuracy, and custom setups make Mactech's Portable Gantry Milling Machine - Heavy Duty among the most versatile of on-site milling machines for your job.

## FEATURES

- MODULAR DESIGN ALLOWS FOR X-AXIS TO BE INCREASED IN 4' SECTIONS, AND Y-AXIS AVAILABLE IN 6', 9' AND 12'
- ADJUSTABLE JACKING SCREWS AND SUPPORT PLATES MAKE SETUP QUICK AND EASY
- LINEAR RAILS, PRECISION BALL SCREWS AND RIGID SETUP ENSURE ACCURATE MACHINING
- EASY TO USE: REMOTE X AND Y-AXIS MOTOR CONTROLS
- OPTIONAL Z-AXIS POWER FEED

**MACTECH INC.**  
4079 PEPIN AVE UNIT 4  
RED WING MN 55066  
800-328-1488  
[INFO@MACTECHONSITE.COM](mailto:INFO@MACTECHONSITE.COM)

**MACTECH OFFSHORE**  
302 IDA ROAD  
BROUSSARD LA 70518  
337-839-2793  
[INFO@MACTECHOFFSHORE.COM](mailto:INFO@MACTECHOFFSHORE.COM)

**MACTECH KENTUCKY**  
3880 INDUSTRIAL DRIVE  
PADUCAH KY 42001  
270-442-1559  
[INFO@MACTECHONSITE.COM](mailto:INFO@MACTECHONSITE.COM)

**MACTECH WISCONSIN**  
2515 CLEVELAND AVE  
MARINETTE WI 54143  
800-328-1488  
[INFO@MACTECHONSITE.COM](mailto:INFO@MACTECHONSITE.COM)

**MACTECH INTERNATIONAL**  
CONTACT US FROM ANYWHERE  
AROUND THE WORLD  
337-839-2793  
[INFO@MACTECHOFFSHORE.COM](mailto:INFO@MACTECHOFFSHORE.COM)

WORK HARD

WORK SAFE

WE BEFORE ME

WELCOME CHALLENGES

WOW THEM

## SPECIFICATIONS

### X-AXIS:

Electric Feed Motor: 120V Input, 1/2 HP  
Gear Reduction: 40:1  
Feed Rate: 0 to 24.0 inches/minute

### Y-AXIS:

Electric Feed Motor: 120V Input, 1/2 HP  
Gear Reduction: 40:1  
Feed Rate: 0 to 20.0 inches/minute

### Z-AXIS:

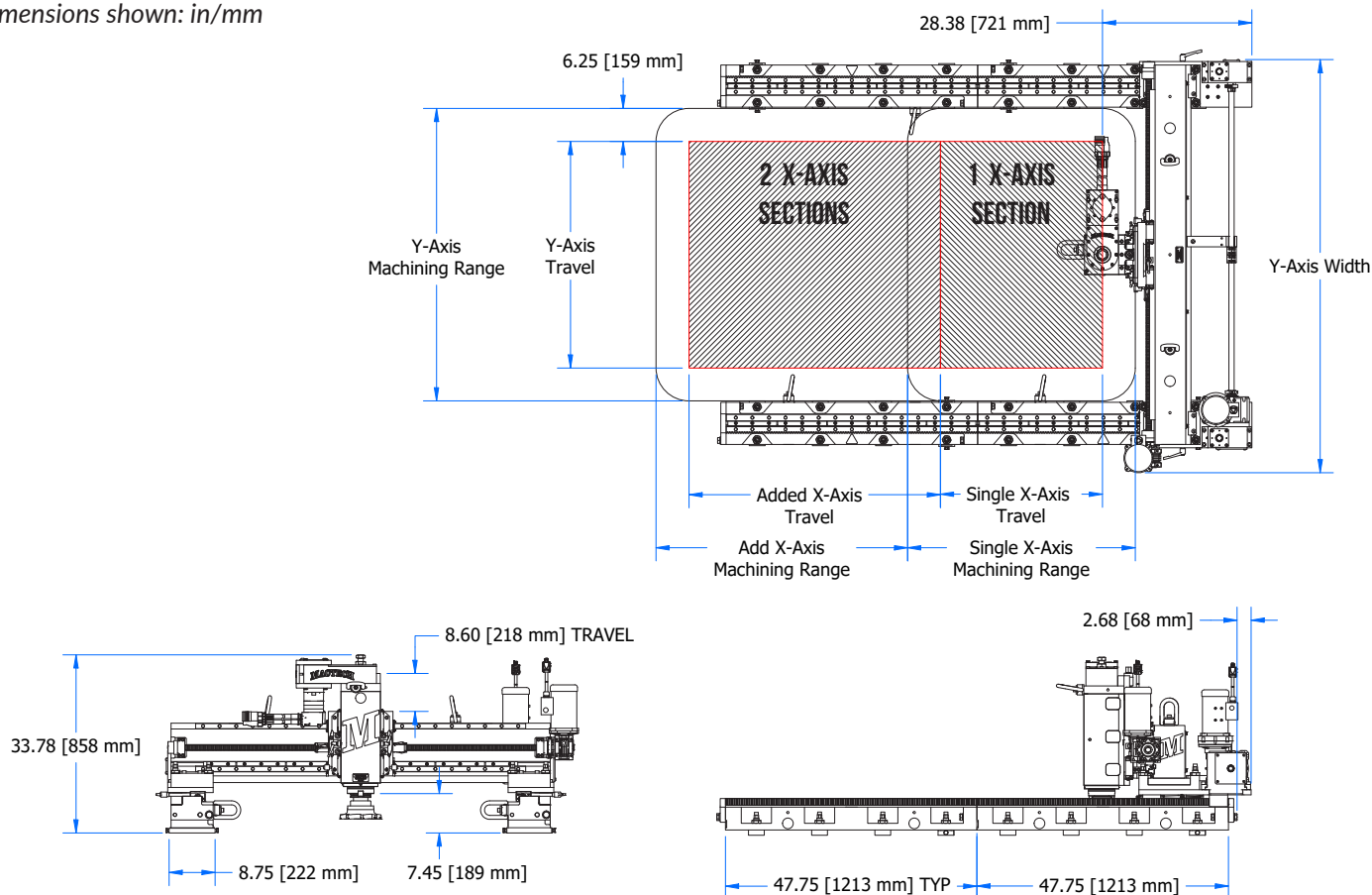
#50 NMTB Taper Shaft Spindle  
Optional Electric Power Feed

### SPINDLE MOTOR:

Electric: 110V or 220V Variable Speed  
Hydraulic: 4.9 or 6.2ci, 800 RPM, 20 GPM

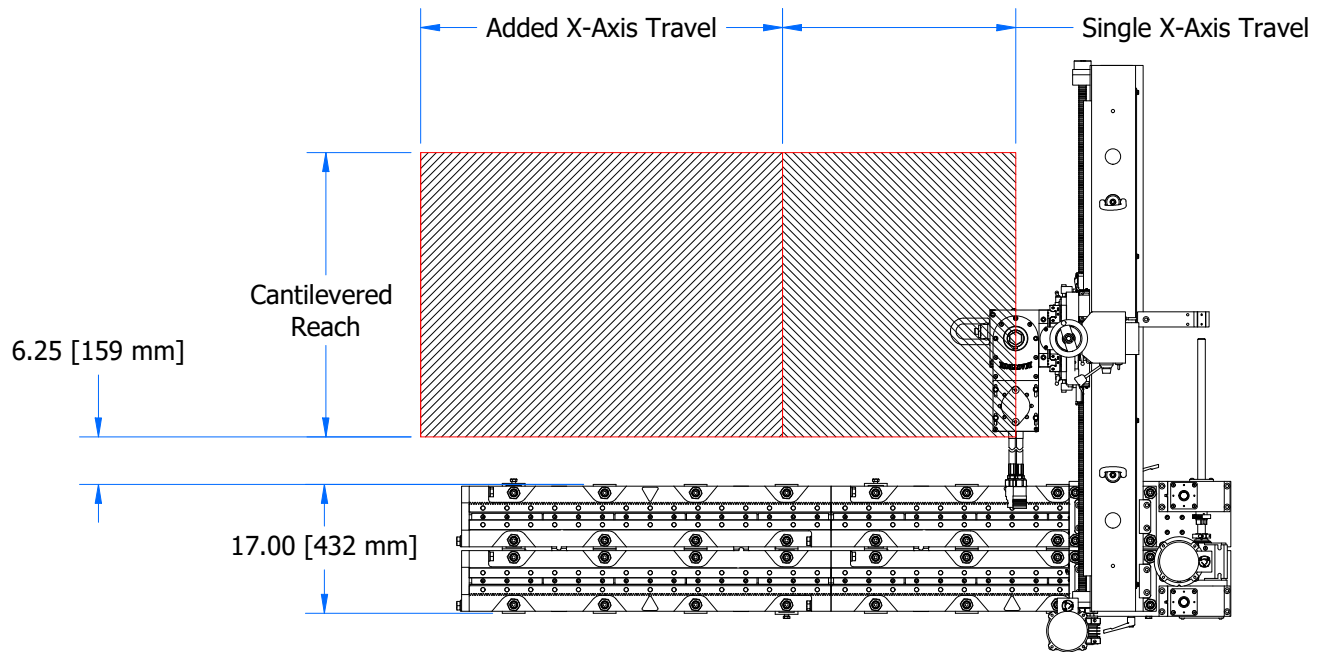
| PGMM - HD                     |          | Dimension (Width)  | Travel      | Machining Range | Cantilevered Reach | Weights          |
|-------------------------------|----------|--------------------|-------------|-----------------|--------------------|------------------|
| Y-Axis Beam(s)                | 6' Beam  | 78"/1981           | 43"/1092    | 55.5"/1409      | 37.5"/952          | 1884lb/854kg     |
|                               | 9' Beam  | 114"/2895          | 79"/2006    | 91.5"/2324      | 73.5"/1867         | 2233lb/1012kg    |
|                               | 12' Beam | 146"/3708          | 115"/2921   | 127.5"/3238     | 109.5"/2781        | 2582lb/1171kg    |
|                               |          | Dimension (Length) |             |                 |                    |                  |
| X-Axis Rail (Single)          |          | 47.75"/1213        | 30.75 /831  | 43.25"/1098     | N/A                | 213lb/96kg (per) |
| X-Axis Rail (Each Additional) |          | 47.75"/1213        | 47.75"/1213 | 47.75"/1213     | N/A                | 213lb/96kg (per) |
|                               |          | Dimension (Height) |             |                 |                    |                  |
| Z-Axis                        |          | 35"/889            | 8.6"/218    | N/A             | N/A                | 301lb/136kg      |

Dimensions shown: in/mm

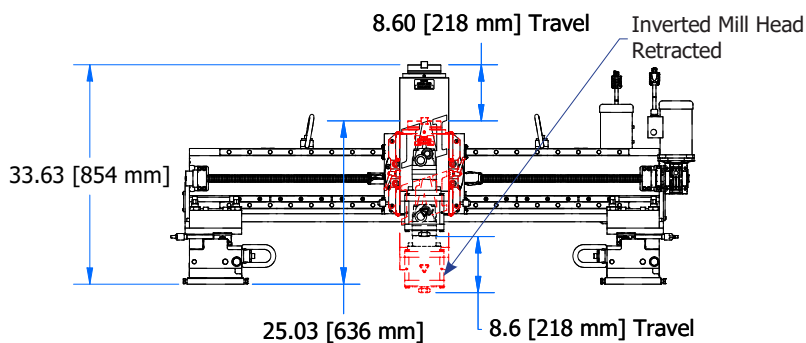


## CANTILEVER EXAMPLE

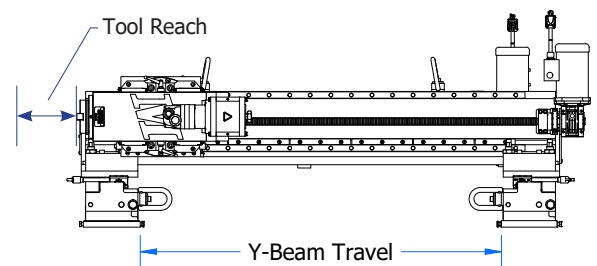
More variations possible depending on setup



## MILL HEAD ROTATION EXAMPLES



**MILL HEAD INVERTED**

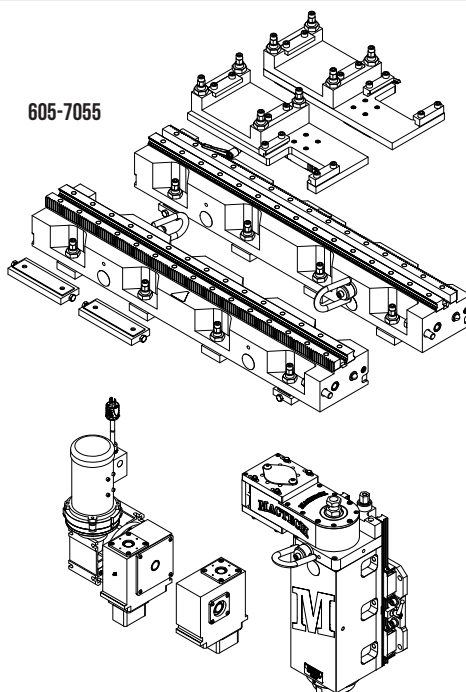


**MILL HEAD HORIZONTAL**

All dimensions and hydraulic requirements are for reference and may be subject to change without notice. Machine performance is subject to application and operator capability; please discuss your requirements directly with a Mactech sales representative. All information given and all sales made by Mactech Inc. are subject to their terms and conditions.

## X-AXIS STARTER KIT (REQUIRED)

**605-7055** Contains: X-Axis MGM - 47.75" Rail Section Assy (2), Left and Right Bridge Mount Assys, X-Axis Drive, X-Axis Idler, Z-Axis MGM Assy - 50NMTB, MGM Tool Kit, Adjustable Weld-On Brackets (2), Setup and Operation Manual, Drawing Package, Shipping Crate

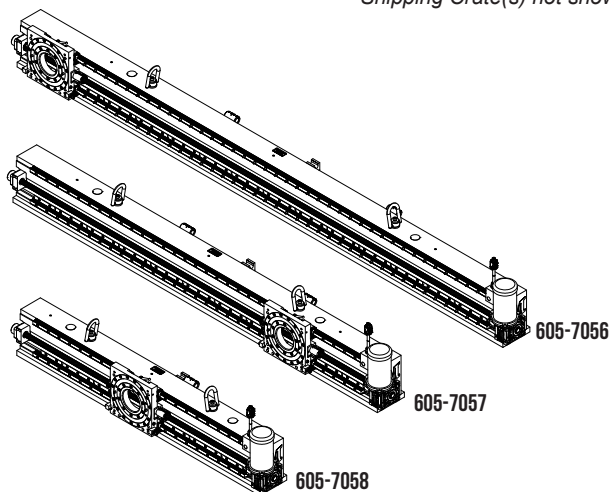


605-7055

## Y-AXIS BEAM PACKAGE OPTIONS (CHOOSE ONE)

Includes Z-Axis Mounting Plate, Rotary Drive Shaft, Electric Drive Assy. 120vac Input, Shipping Crate

**605-7056** MGM 12' - Y/Z-Axis Beam Package  
**605-7057** MGM 9' - Y/Z-Axis Beam Package  
**605-7058** MGM 6' - Y/Z-Axis Beam Package

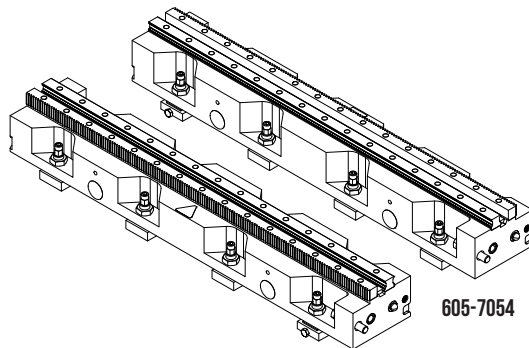


Shipping Crate(s) not shown

## X-AXIS EXTENSION SECTIONS

Each Extension kit adds 48" of travel  
 Includes 2 sections and Shipping Crate

**605-7054** MGM Rail – 48" X-Axis Extension Kit



Shipping Crate not shown

605-7054

## SPINDLE MOTOR OPTIONS (CHOOSE ONE)

### ELECTRIC MOTOR OPTIONS

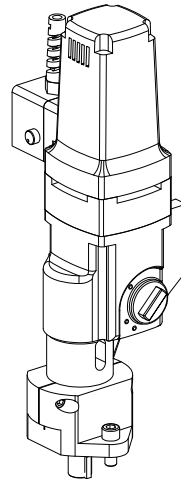
**600-6655** 2200w, 0-570RPM Variable, 4 Speed, Reversible, 220V

**600-6657** 2200w, 0-570RPM Variable, 4 Speed, Reversible, 110V

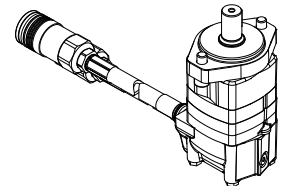
### HYDRAULIC MOTOR OPTIONS

**600-6981** Hyd Drive - 4.9ci, 90-900 RPM, 2-20 GPM Recommended Up to 5" Face Mill

**600-7058** Hyd Drive - 6.2ci, 60-740 RPM, 2-20GPM Recommended for 5-8" Face Mills



600-6655 / 600-6657

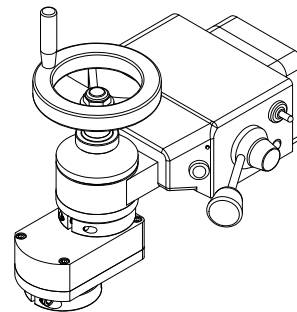


600-6981 / 600-7058

## Z-AXIS SERVO MOTOR (OPTIONAL)

### Power Feed Option

**600-6983** Servo Feed Drive – Mgm 2:1 110V



600-6983

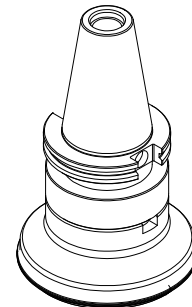
## CUTTER AND FACE MILL OPTIONS

Kits come with the holder, the cutter, 10 inserts, 5 spare screws, and insert tool.

**445-1119** 5" 12 Flt 45° Face Mill With Cat50 Assembly

**445-1122** 6" 10 Flt 45° Face Mill With Cat50 Assembly

**445-1120** 8" 12 Flt 45° Face Mill With Cat50 Assembly



445-1119

## TOOLING AND INSERT OPTIONS

### Available Cutters, Face Mills, and Tool Holders

**445-2013** Face Mill Insert SEMT13T3AGSR-G ACP200 General Purpose Steel

**445-2014** Face Mill Insert SEET13T33AGSR-L ACP100 Light Cutting Steel

**445-2019** Face Mill Insert SEET13T3AGFR-L H1 Aluminum



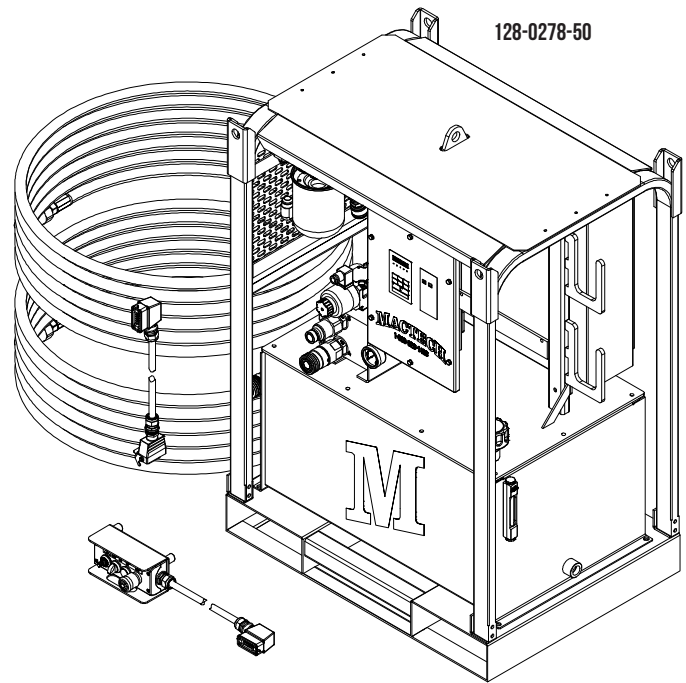
445-2014

*Other material bits have same form factor*

## HYDRAULIC POWER SUPPLY OPTION

Includes: HYD Hoses, 3/4" X 50', 3/4" ISO 16028 Flat Face Quick Disconnects

**128-0278-50** HPS, 20HP 480V, 16 GPM @ 1500



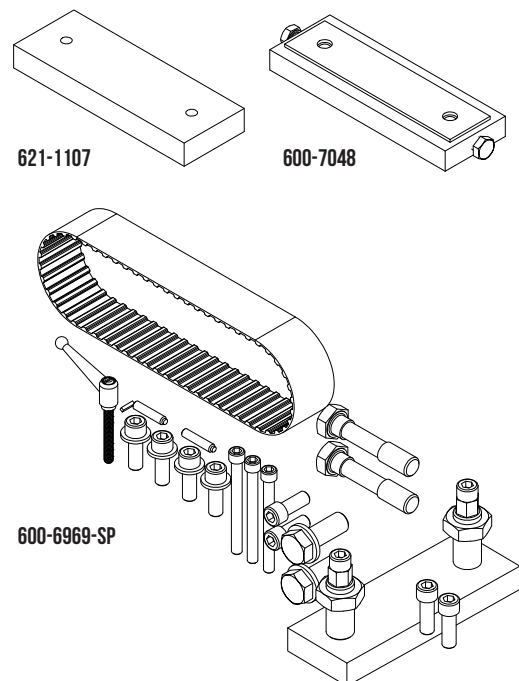
## HAND TOOL KIT (INCLUDED IN X-AXIS STARTER KIT)

Includes: Tool Box, Combination Wrenches, 13pc Long Arm Allen Set, T-Handle Allen Key, 3/8" Ratchet Drive Set, Dead Blow Hammer, Aligning Pry Bar

**600-6969-TK** MGM Tool Kit

## CONSUMABLE ITEMS

- 621-1107** Weld-On Mill Mtg Bracket - Mgm
- 600-7048** X Adjustable Weld On Bracket Assy - Mgm
- 452-0838** Chip Guard - Flexible-Arm, 12 X 12, 12" Magnet Arm
- 600-6969-SP** MGM Spares Kit



All dimensions and hydraulic requirements are for reference and may be subject to change without notice. Machine performance is subject to application and operator capability; please discuss your requirements directly with a Mactech sales representative. All information given and all sales made by Mactech Inc. are subject to their terms and conditions.