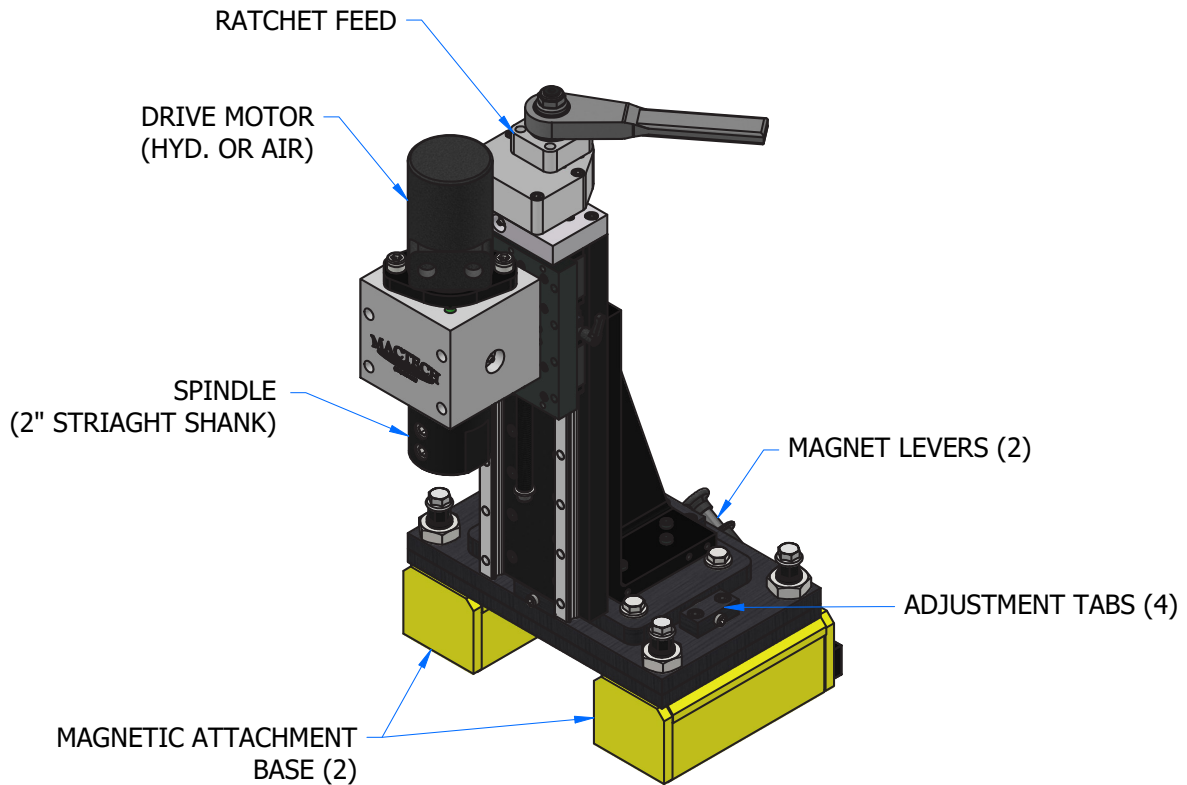


MACTECH

MT6 X 18 BORING MILL LINEAR RAIL BORING MILL W/ MAGNETIC BASE

MACTECHONSITE.COM



PRODUCT DESCRIPTION

The MT6 x 18 Boring Mill is a heavy-duty mill built for drilling and boring holes up to 7" in diameter through a wide range of materials: including steel, steel alloys, aluminum, and more. It features a 6" x 18" slide with 12.5" of travel and an extended spindle designed to accept 2" straight shank tooling. The mill can be mounted using a magnetic base or a weld-on plate with adjustment tabs, allowing precise setup control. For feeding operations, users can choose between a manual ratchet feed or an optional servo feed for enhanced accuracy and productivity.

FEATURES

- STRONG MAGNETIC BASE OR WELD-ON PLATE FOR SETUP
- ADJUSTMENT TABS FOR FINE TUNING
- BORE UP TO 7" DIAMETER HOLES
- 2" STRAIGHT SHANK TOOLING
- 12.5" Z-AXIS TRAVEL
- HYDRAULIC OR AIR MOTOR OPTIONS
- OPTIONAL SERVO FEED

MACTECH INC.
4079 PEPIN AVE UNIT 4
RED WING MN 55066
800-328-1488
INFO@MACTECHONSITE.COM

MACTECH OFFSHORE
302 IDA ROAD
BROUSSARD LA 70518
337-839-2793
INFO@MACTECHOFFSHORE.COM

MACTECH KENTUCKY
3880 INDUSTRIAL DRIVE
PADUCAH KY 42001
270-442-1559
INFO@MACTECHONSITE.COM

MACTECH WISCONSIN
2515 CLEVELAND AVE
MARINETTE WI 54143
800-328-1488
INFO@MACTECHONSITE.COM

MACTECH INTERNATIONAL
CONTACT US FROM ANYWHERE
AROUND THE WORLD
+1 651-388-7117
INFO@MACTECHOFFSHORE.COM

WORK HARD

WORK SAFE

WE BEFORE ME

WELCOME CHALLENGES

WOW THEM

MACTECH

MT6 X 18 BORING MILL LINEAR RAIL BORING MILL W/ MAGNETIC BASE

MACTECHONSITE.COM

SPECIFICATIONS

Z-AXIS:

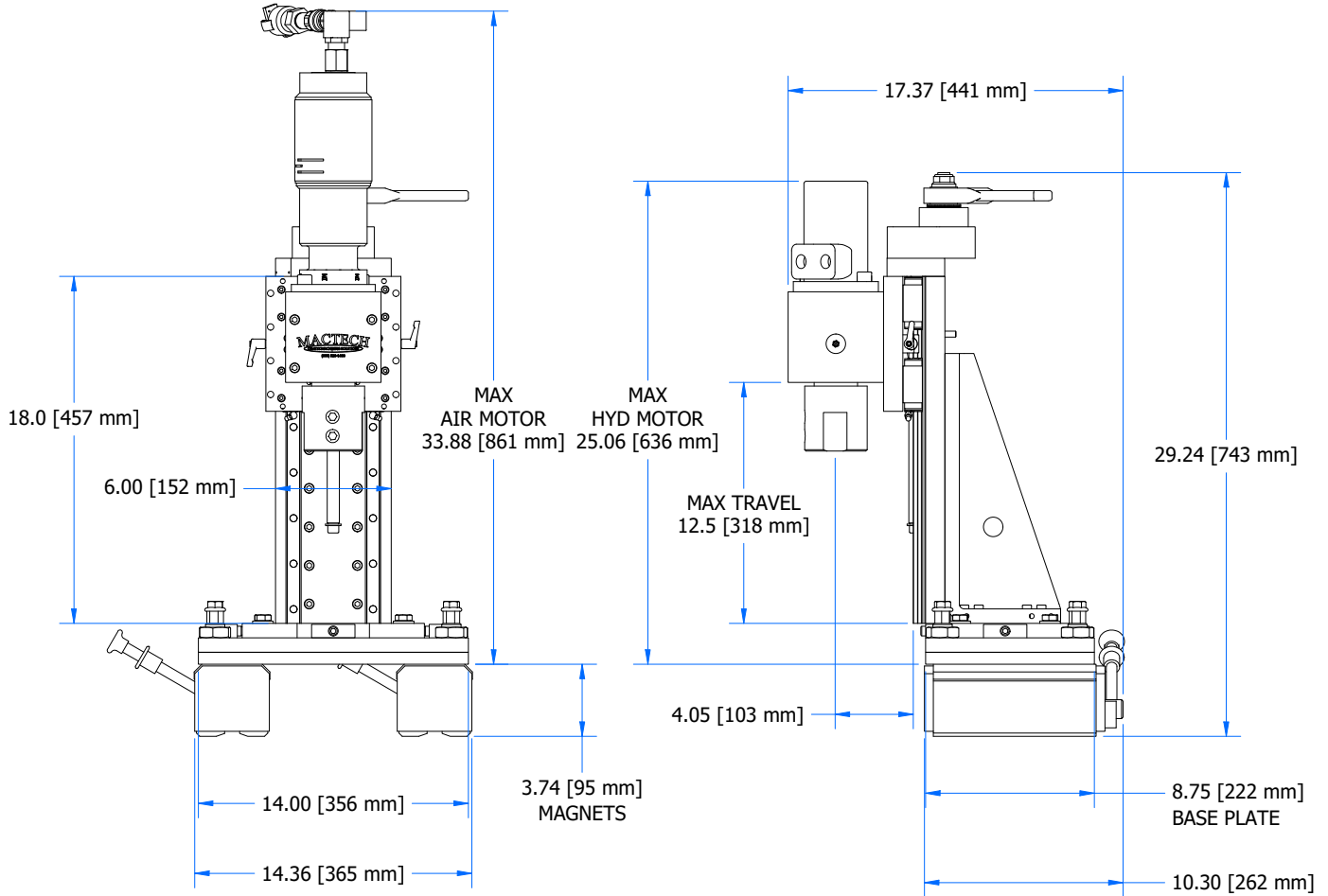
Travel: 12.5" (318mm)
 MT6 Slide: Manual: 1:2 Ratchet Feed
 Optional Electric Feed: 3:1 120V
 Spindle: 2" Straight Shank, 1" Input

SPINDLE MOTOR:

Hydraulic Power Requirement: 2-15 gpm @ 1000 psi continuous pressure.
 Air Power Requirement: 100 cfm @ 100 psi

WEIGHTS:

MT6 x 18 Boring Mill: 211lbs (95kg)
 Hyd. Motor: 16lbs (7kg)
 Air Motor 7lbs (3kg)



MT6 X 18 PACKAGE

Includes MT6 x 18 Boring Mill, MT6 Boring Mill Tool Kit, Ratchet Feed, Shipping Crate

605-6686 MT6 X 18 Boring Mill Package

OPTIONAL EQUIPMENT

600-6731 Servo Feed Drive – 3:1 120V (Z-Axis Electric Feed)

600-6670 2:1 Spindle Drive Multiplier

SPINDLE MOTOR OPTIONS (CHOOSE ONE)

600-1482D 4800 Air Motor Assy - MT30, 89 RPM (In-line Non-Reversible)

600-6658 Hyd Drive - 2 Bolt, 37-353 RPM, 2-15 GPM (36" Hoses)

All dimensions and hydraulic requirements are for reference and may be subject to change without notice. Machine performance is subject to application and operator capability; please discuss your requirements directly with a Mactech sales representative. All information given and all sales made by Mactech Inc. are subject to their terms and conditions.

WORK HARD

WORK SAFE

WE BEFORE ME

WELCOME CHALLENGES

WOW THEM