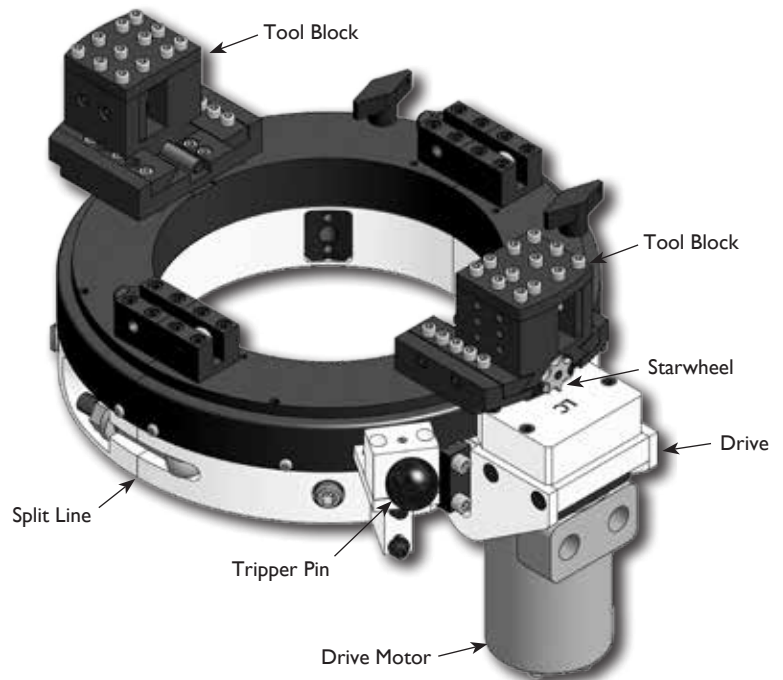


808LC CLAMSHELL LATHE

MACTECH PORTABLE MACHINING SOLUTIONS

Features

- Sever or simultaneous Sever/Bevel NPS 2 to NPS 8 schedule pipe.
- Cold cutting in hazardous environments.
- Exceptionally rigid, split-frame for precise on-site machining.
- Lightweight, low clearance design for easy handling in tight working spaces.
- Tool Holder accepts standard 3/4 or 1 inch tool bits.
- Air Caddy (air filter and oiler) included with air drive systems.
- Custom setups and drives available for your application.



808LC Nominal Pipe Size (NPS) Application Range

Nominal Pipe Size (in.)	Schedule No.	Wall Thickness (in.)	Inside Diameter (in.)	Nominal Pipe Size (in.)	Schedule No.	Wall Thickness (in.)	Inside Diameter (in.)
2 (2.375)	5S	0.065	2.245	5 (5.563)	5S	0.109	5.345
	10S	0.109	2.157		10S	0.134	5.295
	40ST, 40S	0.154	2.067		40ST, 40S	0.258	5.047
	80XS, 80S	0.218	1.939		80XS, 80S	0.375	4.813
	160	0.344	1.687		120	0.500	4.563
	XX	0.436	1.503		XX	0.750	4.313
2 1/2 (2.875)	5S	0.083	2.709	6 (6.625)	5S	0.109	6.407
	10S	0.120	2.635		10S	0.134	6.357
	40ST, 40S	0.203	2.469		40ST, 40S	0.280	6.065
	80XS, 80S	0.276	2.323		80XS, 80S	0.432	5.761
	160	0.375	2.125		120	0.562	5.501
	XX	0.552	1.771		XX	0.719	5.187
3 (3.500)	5S	0.083	3.334	8 (8.625)	5S	0.109	8.407
	10S	0.120	3.260		10S	0.148	8.329
	40ST, 40S	0.216	3.068		20	0.250	8.125
	80XS, 80S	0.300	2.900		30	0.277	8.071
	160	0.438	2.624		40ST, 40S	0.322	7.981
	XX	0.600	2.300		60	0.406	7.813
3 1/2 (4.000)	5S	0.083	3.834		80XS, 80S	0.500	7.625
	10S	0.120	3.760		100	0.594	7.437
	40ST, 40S	0.226	3.548		120	0.719	7.187
	80XS, 80S	0.318	3.364		140	0.812	7.001
						XX	0.875
4 (4.500)	5S	0.083	4.334		160	0.906	6.813
	10S	0.120	4.260				
	40ST, 40S	0.237	4.026				
	80XS, 80S	0.337	3.826				
	120	0.438	3.624				
	160	0.531	3.438				
	XX	0.674	3.152				

Options

- Full line of tool bits
- Right angle and reversible drives
- Single Point machining attachment
- Axial Feed machining attachment
- Counterbore/Facing attachment
- Hydraulic Power Unit

808LC Clamshell Lathe

Application Range

2.38 to 8.63 inch (60 to 219 mm) diameter pipe, NPS 2 to 8

Feed

Feed Mechanism: 7 point starwheel and tripper
Feed Rate: .004 inch (0.09 mm) per revolution

Drives

Air Drive

Air supply requirement: 100 cfm @ 100 psi
(2.8 m³/min @ 6.9 bar)

Hydraulic Drive

HPU requirement: 10-15 gpm @ 1000 psi
(38-57 lpm @ 69 bar) continuous pressure
Hydraulic motor includes hose whips and quick-disconnects

Weights (includes tool blocks and motor)

Operating Weights

808LC Air Drive: 77 lbs. (35 kg)
808LC Hydraulic Drive: 81 lbs. (37 kg)

Shipping Weights

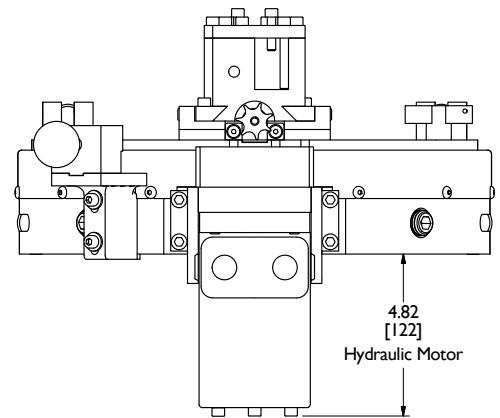
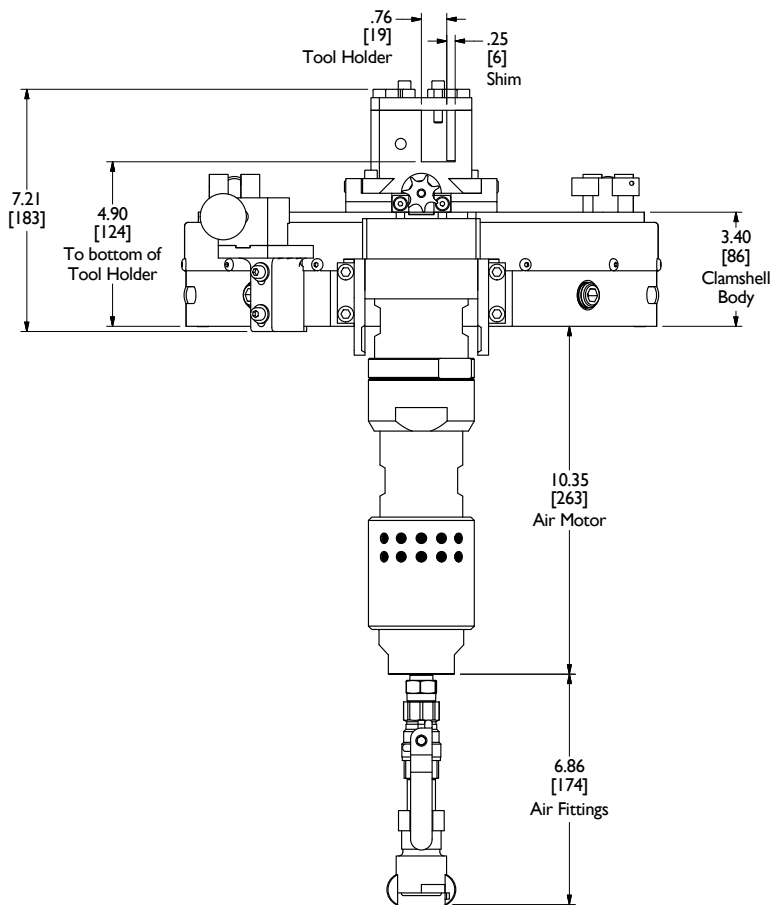
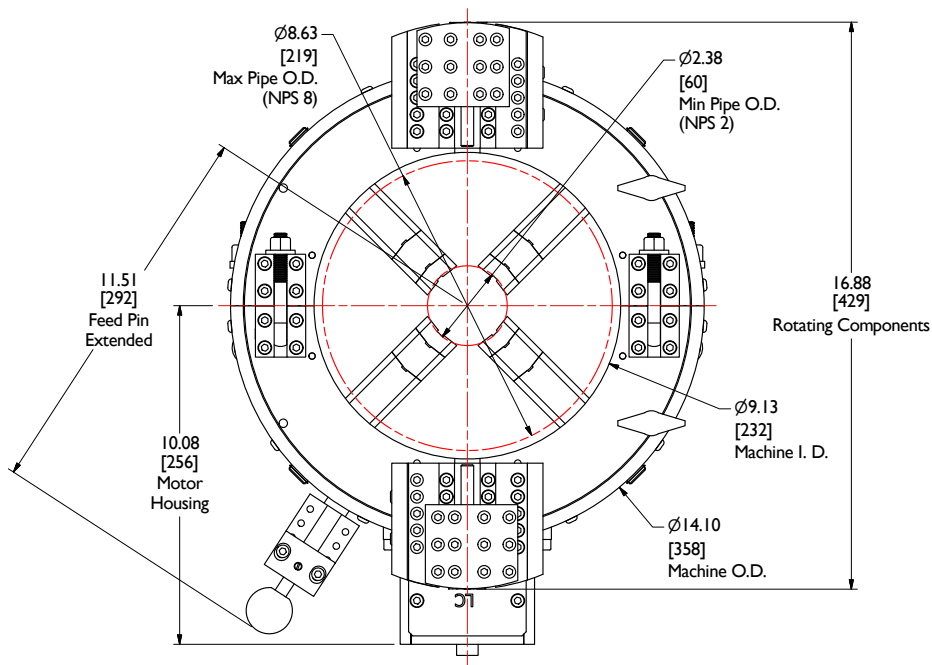
808LC Air Drive: 166 lbs. (75 kg)
808LC Hydraulic Drive: 157 lbs. (71 kg)



Mactech, Inc. • 4079 Pepin Ave. • Red Wing, MN 55066
PH: 651-388-7117 • TOLL FREE: 800-328-1488 • FAX: 651-388-0337
www.mactechonsite.com

808LC CLAMSHELL LATHE

MACTECH PORTABLE MACHINING SOLUTIONS



Mactech, Inc. • 4079 Pepin Ave. • Red Wing, MN 55066
 PH: 651-388-7117 • TOLL FREE: 800-328-1488 • FAX: 651-388-0337
www.mactechonsite.com