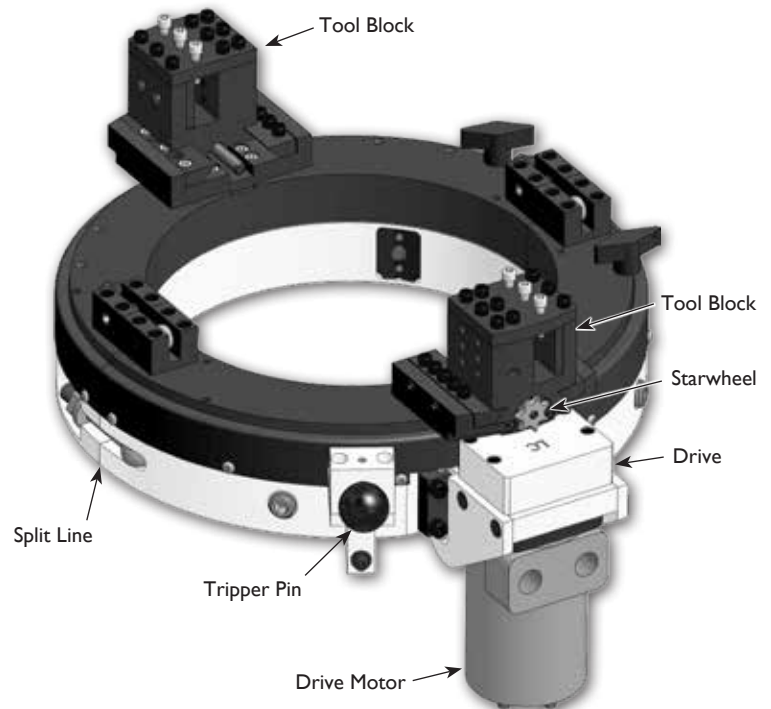


810LC CLAMSHELL LATHE

MACTECH PORTABLE MACHINING SOLUTIONS

Features

- Sever or simultaneous Sever/Bevel NPS 4 to NPS 10 schedule pipe.
- Cold cutting in hazardous environments.
- Exceptionally rigid, split-frame for precise on-site machining.
- Lightweight, low clearance design for easy handling in tight working spaces.
- Tool Holder accepts standard 3/4 or 1 inch tool bits.
- Air Caddy (air filter and oiler) included with air drive systems.
- Custom setups and drives available for your application.



810LC Clamshell Lathe

810LC Nominal Pipe Size (NPS) Application Range

Nominal Pipe Size (in.)	Schedule No.	Wall Thickness (in.)	Inside Diameter (in.)	Nominal Pipe Size (in.)	Schedule No.	Wall Thickness (in.)	Inside Diameter (in.)
4 (4.500)	5S	0.083	4.334	8 (8.625)	5S	0.109	8.407
	10S	0.120	4.260		10S	0.148	8.329
	40ST, 40S	0.237	4.026		20	0.250	8.125
	80XS, 80S	0.337	3.826		30	0.277	8.071
	120	0.438	3.624		40ST, 40S	0.322	7.981
	160	0.531	3.438		60	0.406	7.813
	XX	0.674	3.152		80XS, 80S	0.500	7.625
5 (5.563)	5S	0.109	5.345	100	0.594	7.437	
	10S	0.134	5.295	120	0.719	7.187	
	40ST, 40S	0.258	5.047	140	0.812	7.001	
	80XS, 80S	0.375	4.813	XX	0.875	6.875	
	120	0.500	4.563	160	0.906	6.813	
	160	0.625	4.313	10 (10.750)	5S	0.134	10.482
	XX	0.750	4.063		10S	0.165	10.420
6 (6.625)	5S	0.109	6.407		20	0.250	10.250
	10S	0.134	6.357		30	0.307	10.136
	40ST, 40S	0.280	6.065		40ST, 40S	0.365	10.020
	80XS, 80S	0.432	5.761		60XS, 80S	0.500	9.750
	120	0.562	5.501		80	0.594	9.562
	160	0.719	5.187	100	0.719	9.312	
	XX	0.864	4.897	120	0.844	9.062	
			140, XX	1.000	8.750		
			160	1.125	8.500		

Options

- Full line of tool bits
- Right angle and reversible drives
- Single Point machining attachment
- Axial Feed machining attachment
- Counterbore/Facing attachment
- Hydraulic Power Unit

Application Range

4.50 to 10.75 inch (114 to 273 mm) diameter pipe, NPS 4 to 10

Feed

Feed Mechanism: 7 point starwheel and tripper
Feed Rate: .004 inch (0.09 mm) per revolution

Drives

Air Drive

Air supply requirement: 100 cfm @ 100 psi
(2.8 m³/min @ 6.9 bar)

Hydraulic Drive

HPU requirement: 10-15 gpm @ 1000 psi
(38-57 lpm @ 69 bar) continuous pressure
Hydraulic motor includes hose whips and quick-disconnects

Weights (includes tool blocks and motor)

Operating Weights

810LC Air Drive: 88 lbs. (40 kg)
810LC Hydraulic Drive: 92 lbs. (42 kg)

Shipping Weights

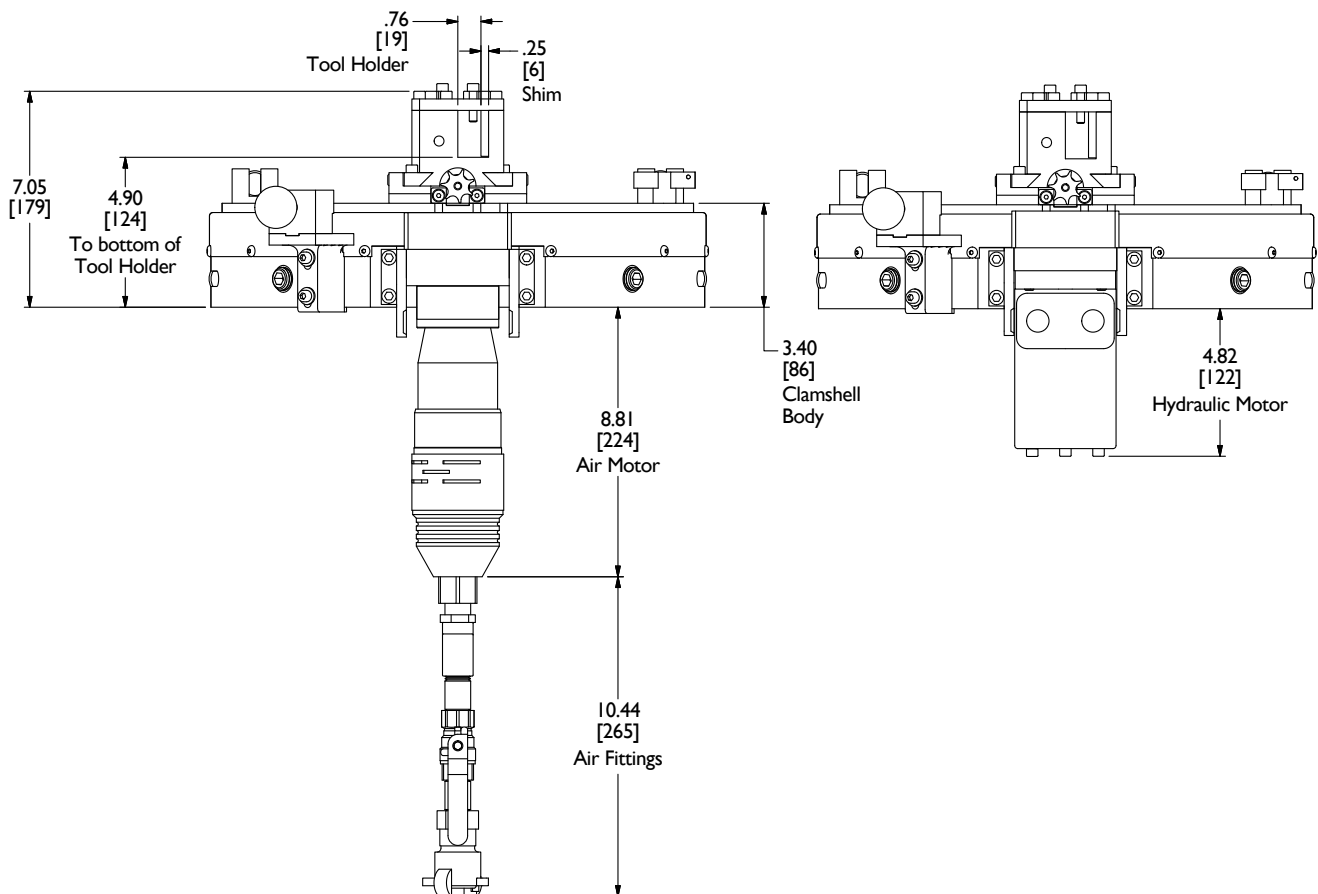
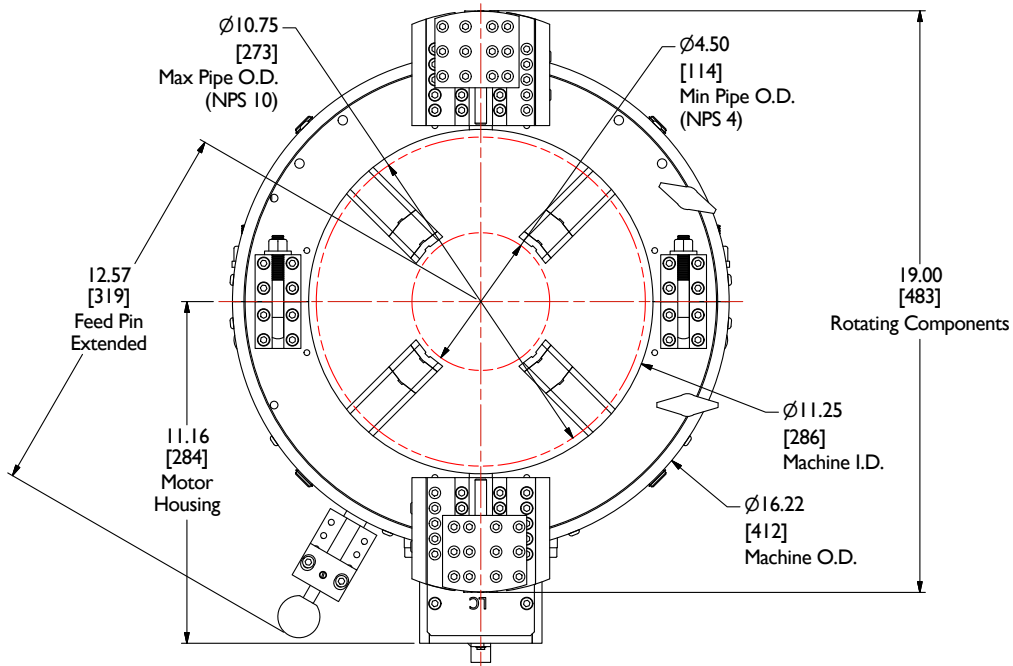
810LC Air Drive: 177 lbs. (80 kg)
810LC Hydraulic Drive: 168 lbs. (76 kg)



Mactech, Inc. • 4079 Pepin Ave. • Red Wing, MN 55066
PH: 651-388-7117 • TOLL FREE: 800-328-1488 • FAX: 651-388-0337
www.mactechonsite.com

810LC CLAMSHELL LATHE

MACTECH PORTABLE MACHINING SOLUTIONS



Mactech, Inc. • 4079 Pepin Ave. • Red Wing, MN 55066
 PH: 651-388-7117 • TOLL FREE: 800-328-1488 • FAX: 651-388-0337
www.mactechonsite.com