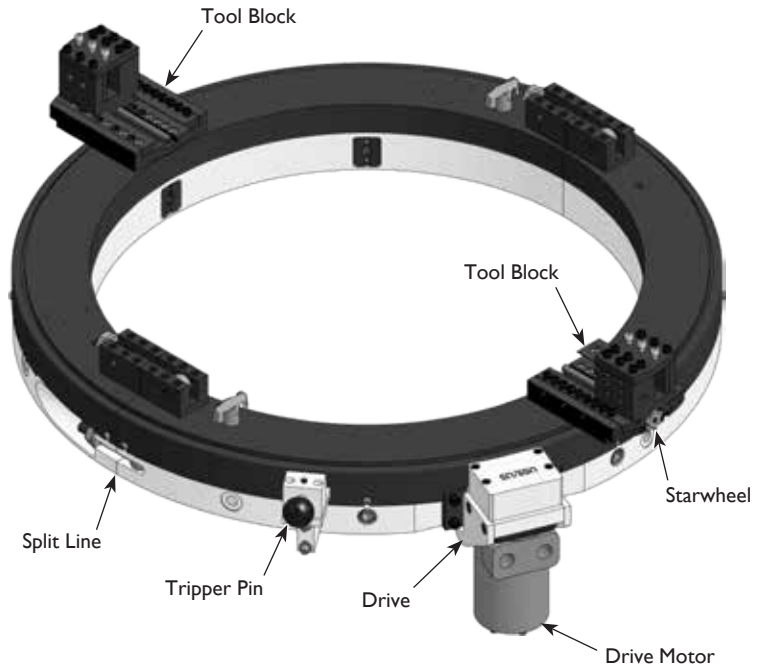


# 828USS CLAMSHELL LATHE

MACTECH PORTABLE MACHINING SOLUTIONS

## Features

- Sever or simultaneous Sever/Bevel NPS 22 to 28 schedule pipe.
- Cold cutting in hazardous environments.
- Exceptionally rigid, split-frame for precise on-site machining.
- Lightweight, low clearance design for easy handling in tight working spaces.
- Tool Holder accepts standard 3/4 or 1 inch tool bits.
- Air Caddy (air filter and oiler) included with air drive systems.
- Custom setups and drives available for your application.



**Mactech 828USS Clamshell Lathe**

### 828USS Nominal Pipe Size (NPS) Application Range

Nominal Pipe Size (in.)	Schedule No.	Wall Thickness (in.)	Inside Diameter (in.)	Nominal Pipe Size (in.)	Schedule No.	Wall Thickness (in.)	Inside Diameter (in.)
22 (22.000)	10, 10S	0.250	21.500	26 (26.000)	10	0.312	25.376
	ST, 20, 40S	0.375	21.250		ST, 40S	0.375	25.250
	XS, 30, 80S	0.500	21.000		XS, 80S	0.500	25.000
	60	0.875	20.250	28 (28.000)	10	0.312	27.376
	80	1.125	19.750		ST, 40S	0.375	27.250
	100	1.375	19.250		20, 80S	0.500	27.000
	120	1.625	18.750		30	0.625	26.750
	140	1.875	18.250				
160	2.125	17.750					
24 (24.000)	5S	0.218	23.564				
	10, 10S	0.250	23.500				
	20, ST	0.375	23.250				
	XS	0.500	23.000				
	30	0.562	22.876				
	40	0.688	22.624				
	60	0.969	22.062				
	80	1.219	21.562				
	100	1.531	20.938				
	120	1.812	20.376				
	140	2.062	19.876				
160	2.344	19.312					

### Application Range

22.00 to 28.00 inch (559 to 711 mm) diameter pipe. NPS 22 to 28

### Feed

Feed Mechanism: 7 point starwheel and tripper  
Feed Rate: .004 inch (0.09 mm) per revolution

### Drives

#### Air Drive

Air supply requirement: 100 cfm @ 100 psi (2.8 m<sup>3</sup>/min @ 6.9 bar)

#### Hydraulic Drive

HPU requirement: 10-15 gpm @ 1000 psi (38-57 lpm @ 69 bar) continuous pressure  
Hydraulic motor includes hose whips and quick-disconnects

### Weights (includes tool blocks and motor)

#### Operating Weights

828USS Air Drive: 247 lbs. (112 kg)

828USS Hydraulic Drive: 248 lbs. (112 kg)

#### Shipping Weights

828USS Air Drive: 430 lbs. (195 kg)

828USS Hydraulic Drive: 418 lbs. (190 kg)

## Options

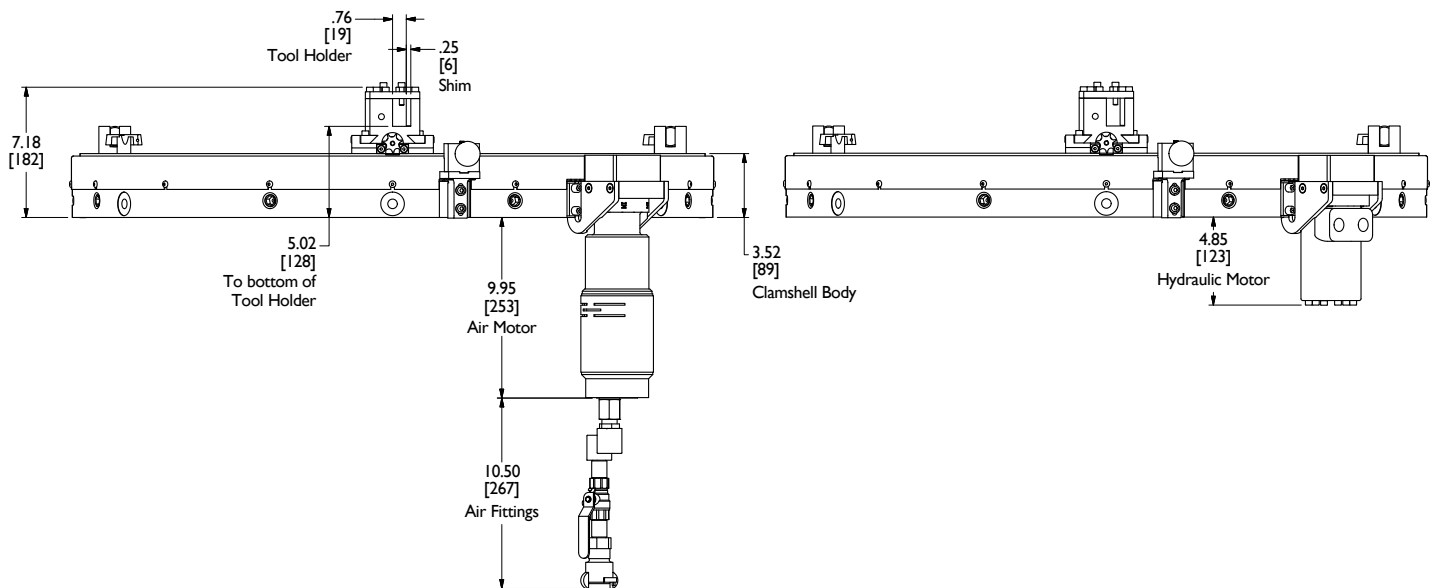
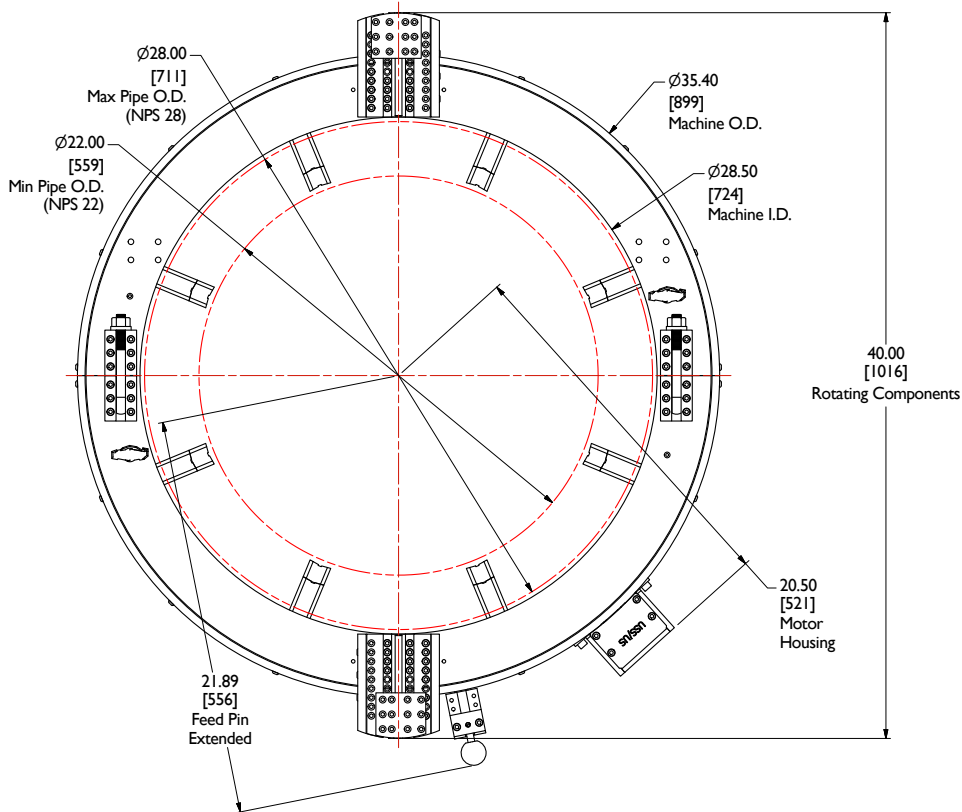
- Full line of tool bits
- Right angle and reversible drives
- Single Point machining attachment
- Axial Feed machining attachment
- Counterbore/Facing attachment
- Hydraulic Power Unit



Mactech, Inc. • 4079 Pepin Ave. • Red Wing, MN 55066  
PH: 651-388-7117 • TOLL FREE: 800-328-1488 • FAX: 651-388-0337  
[www.mactechonsite.com](http://www.mactechonsite.com)

# 828USS CLAMSHELL LATHE

MACTECH PORTABLE MACHINING SOLUTIONS



Mactech, Inc. • 4079 Pepin Ave. • Red Wing, MN 55066  
 PH: 651-388-7117 • TOLL FREE: 800-328-1488 • FAX: 651-388-0337  
[www.mactechonsite.com](http://www.mactechonsite.com)