

# 860WD CLAMSHELL LATHE

MACTECH PORTABLE MACHINING SOLUTIONS

## Features

- Sever, Sever/Bevel and End Prep 48 to 60 inch diameter pipe.
- Cold cutting in hazardous environments.
- Exceptionally rigid split-frame for precise on-site machining.
- Lightweight, low clearance design for easy handling in tight working spaces.
- Tool Holder accepts standard size tooling.
- Air Caddy (air filter and oiler) included with air drive systems.
- Custom setups and drives available for your application.



## 860WD Nominal Pipe Size (NPS) Application Range

Nominal Pipe Size (in.)	Schedule No.	Wall Thickness (in.)	Inside Diameter (in.)	Nominal Pipe Size (in.)	Schedule No.	Wall Thickness (in.)	Inside Diameter (in.)
48 (48.000)	ST, 40S XS, 80S	0.375 0.500	47.250 47.000	60 (60.000)	40S, ST 80S, XH	0.375 0.500	59.250 59.000
54 (54.000)	ST XH	0.375 0.500	53.250 53.000				

## Options

- Air, Hydraulic or Electric drives
- Full line of tool bits
- Right angle and reversible drives
- Single Point machining attachment
- Axial Feed machining attachment
- Counterbore/Facing attachment
- Hydraulic Power Unit

## Application Range

48.00 to 60.00 inch (1219 to 1524 mm) diameter pipe

## Feed

Feed Mechanism: 4 point starwheel with 3-pin tripper feed.

Feed Rate: .002, .004 or .006 inches per revolution (0.05, 0.11 or 0.16 mm).

## Drives

### Air Drive

Air supply requirement: 100 cfm @100 psi (2.8 m<sup>3</sup>/min @ 6.9 bar)

### Hydraulic Drive

HPU requirement: 10-15 gpm @ 1000 psi (38-57 lpm @ 69 bar) continuous pressure  
Hydraulic motor includes hose whips and quick-disconnects

## Weights (includes tool blocks and motor)

### Operating Weights

860WD Air Drive: 946 lbs. (429 kg)

860WD Hydraulic Drive: 958 lbs. (435 kg)

### Shipping Weights

860WD Air Drive: 1325 lbs. (601 kg)

860WD Hydraulic Drive: 1336 lbs. (606 kg)

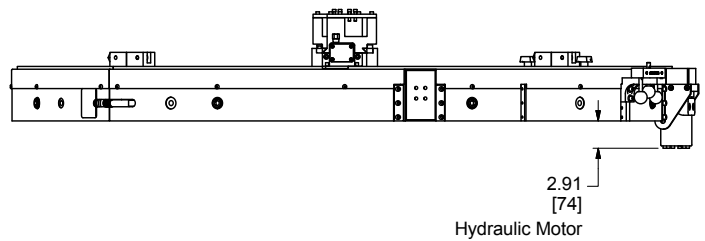
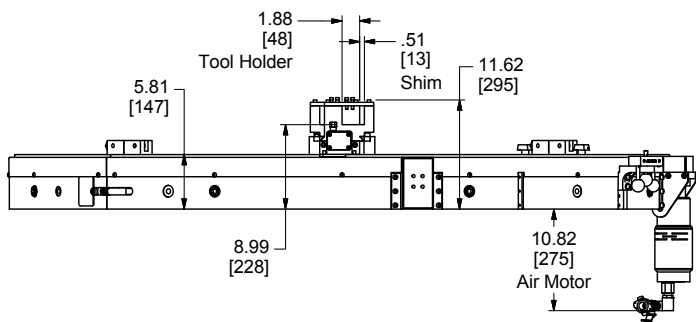
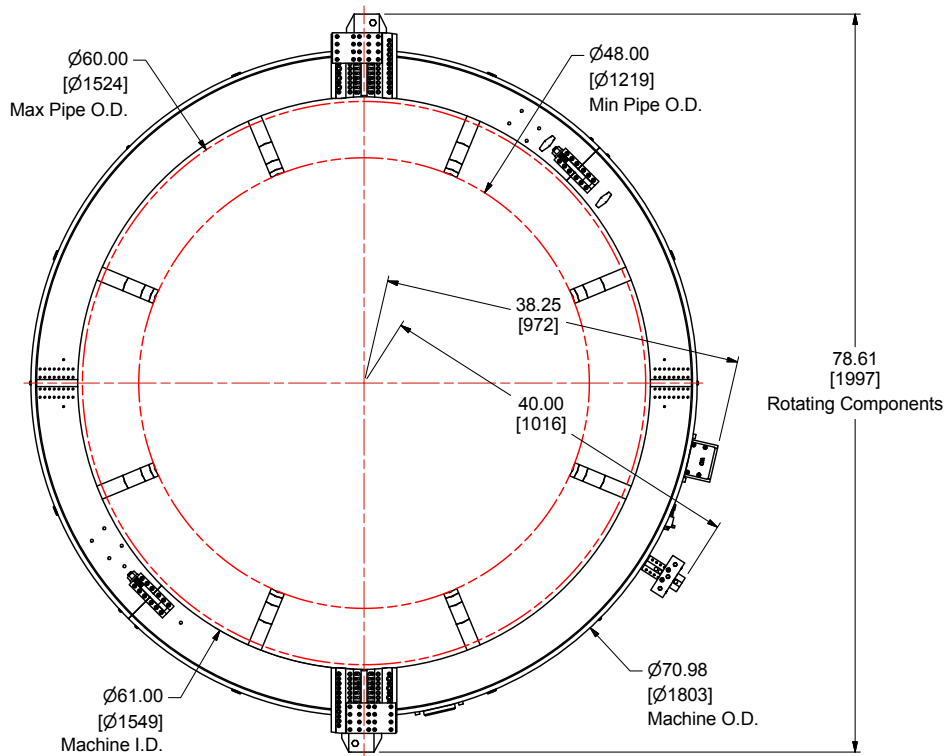


Mactech, Inc. • 4079 Pepin Ave. • Red Wing, MN 55066  
Phone: 651-388-7117 • Toll Free: 800-328-1488

[www.mactechonsite.com](http://www.mactechonsite.com)

# 860WD CLAMSHELL LATHE

MACTECH PORTABLE MACHINING SOLUTIONS



# MACTECH

ON-SITE MACHINING SOLUTIONS

Mactech, Inc. • 4079 Pepin Ave. • Red Wing, MN 55066  
Phone: 651-388-7117 • Toll Free: 800-328-1488  
[www.mactechonsite.com](http://www.mactechonsite.com)