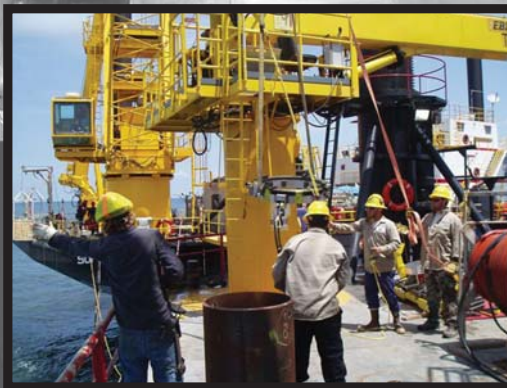


MACTECH CAPABILITIES

MACTECH PORTABLE MACHINING SOLUTIONS



MACTECH
ON-SITE MACHINING SOLUTIONS

MACTECH CAPABILITIES

MACTECH PORTABLE MACHINING SOLUTIONS

Mactech is one of the world's foremost providers of on-site services and equipment.

Our company provides both product and on-site services for major industries worldwide including petrochemical, pulp and paper, power generation and shipbuilding. Our key strength is the ability to assist you with routine and specialty applications - our on-site solutions team can handle any task and will develop solutions from start to finish. Mactech's excellent reputation for short lead-time and quick response is unsurpassed in the industry.



MACTECH ON-SITE CAPABILITIES

Line Boring

Mactech has the ability to line bore and reface equipment in the field from a single set up. Our standard bars range from 1 3/4" to 10" diameters and lengths up to 24'. We have an extensive inventory including our newest addition, the 2 1/4" BB2250.

Flange Facing

Our flange refacing capabilities cover from 1" flanges to surfaces up to 20 foot in diameter, with close tolerances achieved in the field. ID and OD mount configurations are available.

Pipe Cutting

We offer a wide range of size and quantity. We can cut 1" to 60" and all tooling and weld prep geometries are self designed and ground. Our low clearance line is light and fits in tight situations while still being very strong. Our machines are extremely rigid, accurate and precise with quick setup and great versatility. Many tasks can be performed such as sever, sever/bevel, counterbore, and single point flange facing.



MACTECH CAPABILITIES

MACTECH PORTABLE MACHINING SOLUTIONS

Shaft Repair

Mactech offers a range of end mount and mid shaft machines. In place machining of shaft surfaces to close tolerances with split frame drive units allows repair in difficult access areas.

Milling

Offered are a variety of milling tools and services including for motor bases and other rotating equipment as well as platens, presses and similar applications. Equipment is capable of large surface area machining to fitting in very tight quarters. Custom modifications and setups are always welcome. We carry various sizes and configurations with extensive fixtures and capacity.

Drilling

Drilling applications from large stud removal to magnetic based smaller needs. Models range from MT 30 Rack Drill to powerful hydraulic 24" HD Mills.

Specialty Boiler Services

Mactech offers unique, time saving approaches to on site applications such as steam drum hole drilling, manway resurfacing and welded tube stub removal in a variety of under pressure applications and industries.



STRESSTECH

HEAT TREATING

Heat Treating

Our Stresstech product line has been an industry leader in pre and post weld heat treat equipment for more than 30 years. We offer the most powerful and dependable and portable heat treat controller consoles in the industry along with top quality heat treat consumables and accessories.



PIPE CHART

MACTECH PORTABLE MACHINING SOLUTIONS

| Nominal Pipe Size (inches) | Schedule Number | Wall Thickness (inches) | Inside Diameter (inches) | Nominal Pipe Size (inches) | Schedule Number | Wall Thickness (inches) | Inside Diameter (inches) | Nominal Pipe Size (inches) | Schedule Number | Wall Thickness (inches) | Inside Diameter (inches) |
|----------------------------|-----------------|-------------------------|--------------------------|----------------------------|-----------------|-------------------------|--------------------------|----------------------------|-----------------|-------------------------|--------------------------|
| 1 (1.315) | 5S | 0.065 | 1.185 | 6 (6.625) | 5S | 0.109 | 6.407 | 16 (16) | 5S | 0.169 | 15.670 |
| | 10S | 0.109 | 1.097 | | 10S | 0.134 | 6.357 | | 10S | 0.188 | 16.624 |
| | 40ST, 40S | 0.133 | 1.049 | | 40ST, 40S | 0.280 | 6.065 | | 10 | 0.250 | 15.500 |
| | 80XS, 80S | 0.179 | 0.957 | | 80XS, 80S | 0.432 | 5.761 | | 20 | 0.312 | 15.376 |
| | 160 | 0.250 | 0.815 | | 120 | 0.562 | 5.501 | | 30, ST | 0.375 | 15.250 |
| 1 1/4 (1.660) | 5S | 0.065 | 1.530 | 8 (8.625) | 160 | 0.719 | 5.187 | 40, XS | 0.500 | 15.000 | |
| | 10S | 0.109 | 1.442 | | XX | 0.864 | 4.897 | 60 | 0.656 | 14.688 | |
| | 40ST, 40S | 0.140 | 1.380 | | 5S | 0.109 | 8.407 | 80 | 0.844 | 14.312 | |
| | 80XS, 80S | 0.191 | 1.278 | | 10S | 0.148 | 8.329 | 100 | 1.031 | 13.938 | |
| | 160 | 0.250 | 1.160 | | 20 | 0.250 | 8.125 | 120 | 1.219 | 13.562 | |
| 1 1/2 (1.900) | XX | 0.382 | 0.896 | 30 | 0.277 | 8.071 | 140 | 1.438 | 13.124 | | |
| | 5S | 0.065 | 2.770 | 40ST, 40S | 0.322 | 7.981 | 160 | 1.594 | 12.812 | | |
| | 10S | 0.109 | 2.682 | 60 | 0.406 | 7.813 | 18 (18) | 5S | 0.165 | 17.670 | |
| | 40ST, 40S | 0.145 | 2.610 | 80XS, 80S | 0.500 | 7.625 | | 10S | 0.188 | 17.624 | |
| | 80XS, 80S | 0.200 | 2.500 | 100 | 0.594 | 7.437 | | 10 | 0.250 | 17.500 | |
| 160 | 0.281 | 2.338 | 120 | 0.719 | 7.187 | 20 | | 0.312 | 17.376 | | |
| XX | 0.400 | 2.100 | 140 | 0.812 | 7.001 | ST | | 0.375 | 17.250 | | |
| 2 (2.375) | 5S | 0.065 | 2.245 | XX | 0.875 | 6.875 | 30 | 0.438 | 17.124 | | |
| | 10S | 0.109 | 2.157 | 160 | 0.906 | 6.813 | XS | 0.500 | 17.000 | | |
| | 40ST, 40S | 0.154 | 2.067 | 10 (10.75) | 5S | 0.134 | 10.482 | 40 | 0.562 | 16.876 | |
| | 80XS, 80S | 0.218 | 1.939 | | 10S | 0.165 | 10.420 | 60 | 0.750 | 16.500 | |
| | 160 | 0.344 | 1.687 | | 20 | 0.250 | 10.250 | 80 | 0.938 | 16.124 | |
| XX | 0.436 | 1.503 | 30 | | 0.307 | 10.136 | 100 | 1.156 | 15.688 | | |
| 5S | 0.083 | 2.709 | 40ST, 40S | | 0.365 | 10.020 | 120 | 1.375 | 15.250 | | |
| 2 1/2 (2.875) | 10S | 0.120 | 2.635 | 60XS, 80S | 0.500 | 9.750 | 140 | 1.562 | 14.876 | | |
| | 40ST, 40S | 0.203 | 2.469 | 80 | 0.594 | 9.562 | 160 | 1.781 | 14.438 | | |
| | 80XS, 80S | 0.276 | 2.323 | 100 | 0.719 | 9.312 | 20 (20) | 5S | 0.188 | 19.624 | |
| | 160 | 0.375 | 2.125 | 120 | 0.844 | 9.062 | | 10S | 0.218 | 19.564 | |
| | XX | 0.552 | 1.771 | 140, XX | 1.000 | 8.750 | | 10 | 0.250 | 19.500 | |
| 5S | 0.083 | 3.334 | 160 | 1.125 | 8.500 | 20, ST | | 0.375 | 19.250 | | |
| 10S | 0.120 | 3.260 | 12 (12.75) | 5S | 0.156 | 12.438 | | 30, XS | 0.500 | 19.000 | |
| 40ST, 40S | 0.216 | 3.068 | | 10S | 0.180 | 12.390 | 40 | 0.594 | 18.812 | | |
| 80XS, 80S | 0.300 | 2.900 | | 20 | 0.250 | 12.250 | 60 | 0.812 | 18.376 | | |
| 160 | 0.438 | 2.624 | | 30 | 0.330 | 12.090 | 80 | 1.031 | 17.938 | | |
| XX | 0.600 | 2.300 | | ST, 40S | 0.375 | 12.000 | 100 | 1.281 | 17.438 | | |
| 3 (3.5) | 5S | 0.083 | 3.834 | 40 | 0.406 | 11.938 | 120 | 1.500 | 17.000 | | |
| | 10S | 0.120 | 3.760 | XS, 80S | 0.500 | 11.750 | 140 | 1.750 | 16.500 | | |
| | 40ST, 40S | 0.226 | 3.548 | 60 | 0.562 | 11.626 | 160 | 1.969 | 16.062 | | |
| | 80XS, 80S | 0.318 | 3.364 | 80 | 0.688 | 11.374 | 24 (24) | 5S | 0.218 | 23.564 | |
| | 5S | 0.083 | 4.334 | 100 | 0.844 | 11.062 | | 10, 10S | 0.250 | 23.500 | |
| 10S | 0.120 | 4.260 | 120, XX | 1.000 | 10.750 | 20, ST | | 0.375 | 23.250 | | |
| 40ST, 40S | 0.237 | 4.026 | 140 | 1.125 | 10.500 | XS | | 0.500 | 23.000 | | |
| 80XS, 80S | 0.337 | 3.826 | 160 | 1.312 | 10.126 | 30 | | 0.562 | 22.876 | | |
| 4 (4.5) | 120 | 0.438 | 3.624 | 14 (14) | 5S | 0.156 | 13.688 | 40 | 0.688 | 22.624 | |
| | 160 | 0.531 | 3.438 | | 10S | 0.188 | 13.624 | 60 | 0.969 | 22.062 | |
| | XX | 0.674 | 3.152 | | 10 | 0.250 | 13.500 | 80 | 1.219 | 21.562 | |
| | 5S | 0.109 | 5.345 | | 20 | 0.312 | 13.376 | 100 | 1.531 | 20.938 | |
| | 10S | 0.134 | 5.295 | | 30, ST | 0.375 | 13.250 | 120 | 1.812 | 20.376 | |
| 5 (5.563) | 40ST, 40S | 0.258 | 5.047 | 40 | 0.438 | 13.124 | 140 | 2.062 | 19.876 | | |
| | 80XS, 80S | 0.375 | 4.813 | XS, 80S | 0.500 | 13.000 | 160 | 2.344 | 19.312 | | |
| | 120 | 0.500 | 4.563 | 60 | 0.594 | 12.812 | 30 (30) | 5S | 0.250 | 29.500 | |
| | 160 | 0.625 | 4.313 | 80 | 0.750 | 12.500 | | 10, 10S | 0.312 | 29.376 | |
| | XX | 0.750 | 4.063 | 100 | 0.938 | 12.124 | | ST | 0.375 | 29.250 | |
| 5S | 0.109 | 5.345 | 120 | 1.094 | 11.812 | 20, XS | | 0.500 | 29.000 | | |
| 10S | 0.134 | 5.295 | 140 | 1.250 | 11.500 | 30 | | 0.625 | 28.750 | | |
| 40ST, 40S | 0.258 | 5.047 | 160 | 1.406 | 11.188 | | | | | | |



Mactech, Inc. • 4079 Pepin Ave. • Red Wing, MN 55066

PH: 651-388-7117 • TOLL FREE: 800-328-1488 • FAX: 651-388-0337 • www.mactechonsite.com