

MACTECH FLANGE FACERS

MACTECH PORTABLE MACHINING SOLUTIONS

Our flange refacing capabilities cover from 1" flanges to surfaces up to 20' in diameter, with close tolerances achieved in the field. ID and OD mount configurations are available.

Model 6-18 Flange Facer

The 6-18 Flange Facer has the ability to re-face from 7.2" to 18" diameter and fits into bore ID's from 4.74" to 11.84". This portable, easy to set-up and accurate machine may be mounted in any position making difficult locations less of a factor.



Model 40 Flange Facer

The FF40 Portable Flange Facer is an ID-mount flange re-facer. Its compact design makes it an ideal on-site maintenance tool. The machine fits into bores with ID's from 14" to 34" (355.6 to 863.6 mm) and can face from 14" out to 42" (355.6 to 1066.8 mm).

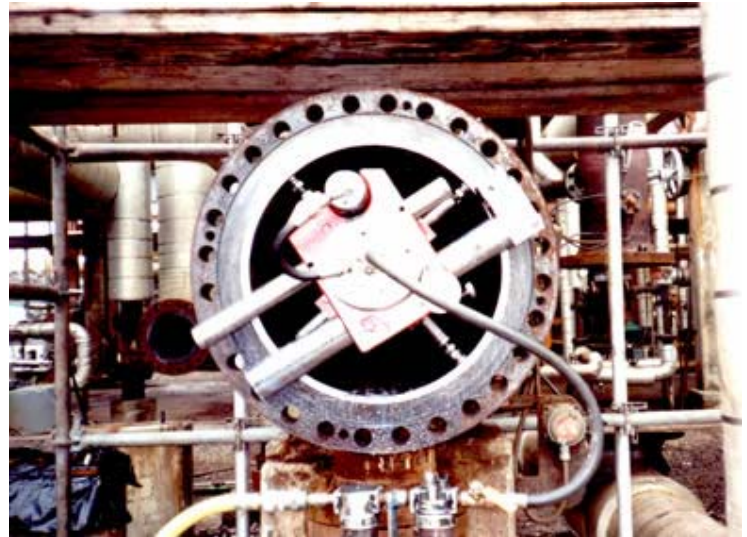
Special Options

An optional large chuck and bar assembly is available for facing out to 60" (1524 mm).

Specifications

The FF40 Flange Facer consists of:

1. Mechanical radial feed
2. Mechanical tool down feed (not shown)
3. Chuck, jaws, and jacking bolts
4. Main body
5. Turning bar and counterweight bar
6. Air motor and rotary union
7. Tool head with 45° swivel and tool holder



MACTECH FLANGE FACERS

MACTECH PORTABLE MACHINING SOLUTIONS

Model 3096 Flange Facer

This Hydraulic Flange facer will face 30" to 110" (762 to 2438 mm) diameter flanges. The ID-mount FF3096 fits inside 30" to 110" diameter bores. The standard machine can face flanges from 30" to 96" (762 to 2438.4 mm) in diameter.



The OD-mount FF3096 mounts to work pieces with outside diameters from 30.5" to 109.5" (774.7 to 2781.3 mm). The standard machine can face flanges from 30" to 96" (762 to 2438.4 mm) in diameter.



MACTECH
ON-SITE MACHINING SOLUTIONS