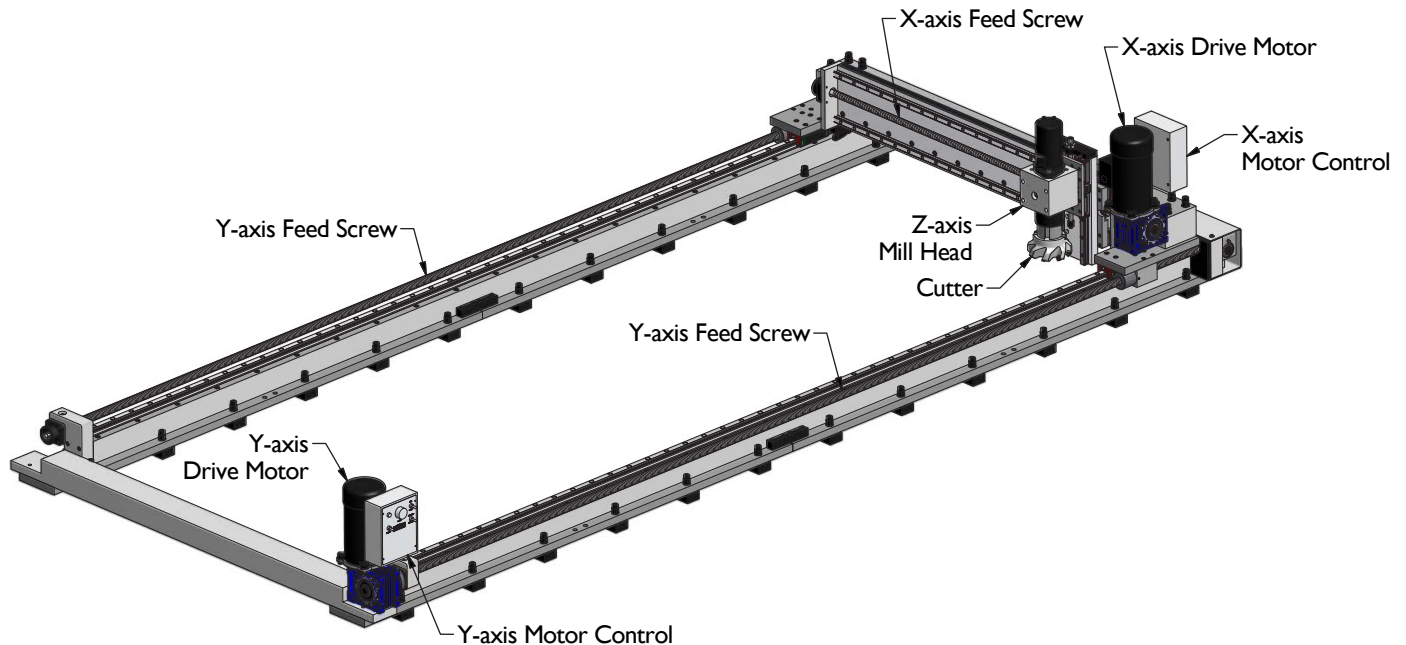


# GANTRY MILL, 1000 x 3000

MACTECH PORTABLE MACHINING SOLUTIONS

## Lightweight, Versatile and Accurate 3-axis Gantry Mill



*Mactech Gantry Mill, 1000 x 3000*

### Introducing Mactech's new Gantry Mill.

Save costly shop repairs with accurate, on-site milling, drilling and machining with no sag, and extended Y-axis reach. The modular frame and rail assemblies mean you can have a custom mill, built to your specifications, quickly delivered right to your job site. The innovative design allows you to tell us your machining area, and Mactech will build a Gantry Mill to meet your on-site milling needs. A powerful hydraulic drive motor makes smooth, clean and efficient cuts. The lightweight design gives you trouble-free lifting and positioning. Adjustable support plates make setup and leveling quick and easy.

Fast response, the best technicians and support, short delivery times, high accuracy, and custom setups make Mactech's Gantry Mill among the most versatile of on-site milling machines for your job.

### Features

- **Lightweight design makes lifting and positioning easier.**
- **Modular assemblies make custom arrangements available with short delivery times.**
- **Adjustable jacking screws and support plates make setup and leveling quick and easy.**
- **Linear rails, precision ball screws and rigid setup ensure accurate machining.**
- **Easy to use, remote X and Y-axis motor controls.**

**MACTECH**  
ON-SITE MACHINING SOLUTIONS

Mactech, Inc. • 4079 Pepin Ave. • Red Wing, MN 55066  
Phone: 651-388-7117 • Toll Free: 800-328-1488

[www.mactechonsite.com](http://www.mactechonsite.com)

**MACTECH**  
SUBSEA MACHINING SOLUTIONS  
**OFFSHORE**

Mactech Offshore • 3129 Highway 90 East • Broussard, LA 70518  
Phone: 337-839-2793 • Toll Free: 800-328-1488

[www.mactechoffshore.com](http://www.mactechoffshore.com)

# GANTRY MILL, 1000 x 3000

MACTECH PORTABLE MACHINING SOLUTIONS

## Specifications

### X-axis:

Electric Drive Motor: 180 VDC, 1/2 HP, 2500 rpm  
 Motor Control: 115/230 input voltage  
 Gear Reduction: 40:1  
 Feed Rate: 0 to 30.0 inches/minute

### Y-axis:

Electric Drive Motor: 180 VDC, 1/2 HP, 2500 rpm  
 Motor Control: 115/230 input voltage  
 Gear Reduction: 40:1  
 Feed Rate: 0 to 24.0 inches/minute

### Z-axis:

MT6 Slide, manual feed  
 NMTB Shank, R40 taper bearing quill

### Spindle Motor:

65-69 ft-lbs torque @ 15-20 gpm, 1000 psi  
 462-617 rpm

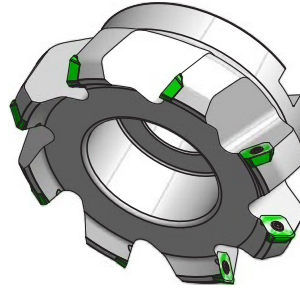
### Cutters:

445-1024 Shell Mill: 4.92 inch cutting diameter, 1-1/2 inch pilot (38 mm), replaceable inserts

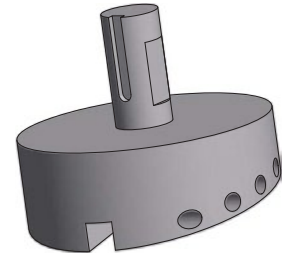
445-8502 Fly Cutter: 4-1/2 inch diameter, accepts standard 1/2 inch tooling

### Weights:

Operating Weight: 1720 lbs.  
 Shipping Weight: 3400 lbs.  
 Shipping Dimensions: 74L x 60W x 33H



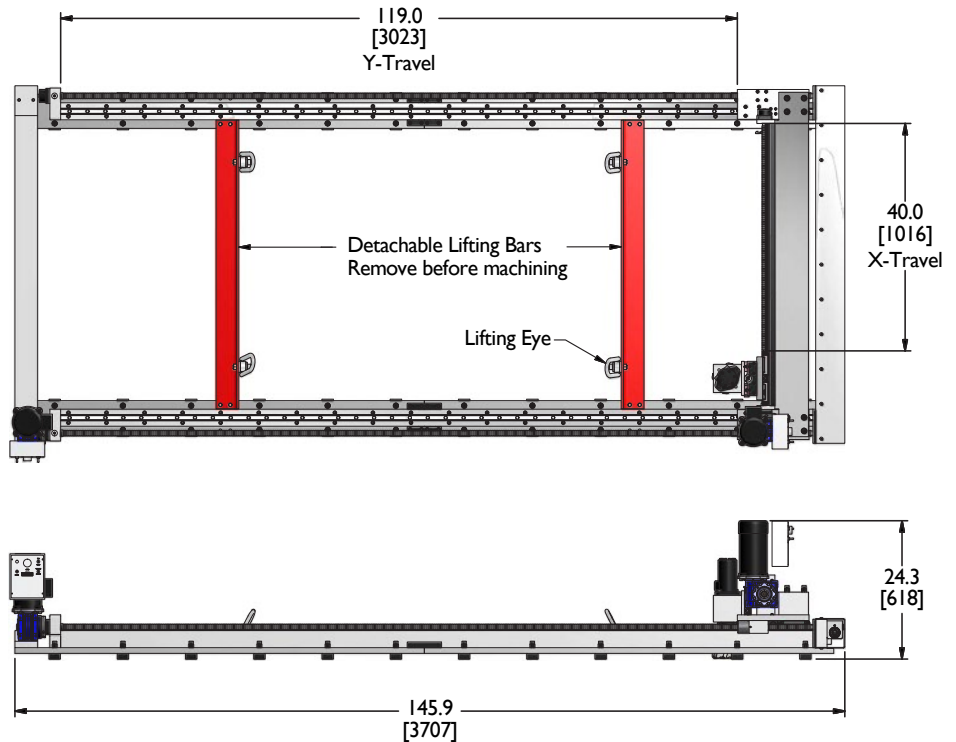
445-1024  
Shell Mill



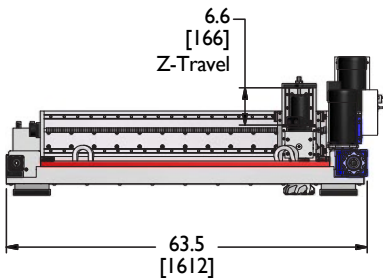
445-8502  
Fly Cutter

Upper dimensions are in inches.

Dimensions in brackets [xx] are in millimeters.



Gantry Mill Dimensions



Mactech, Inc. • 4079 Pepin Ave. • Red Wing, MN 55066  
 Phone: 651-388-7117 • Toll Free: 800-328-1488  
[www.mactechonsite.com](http://www.mactechonsite.com)



Mactech Offshore • 3129 Highway 90 East • Broussard, LA 70518  
 Phone: 337-839-2793 • Toll Free: 800-328-1488  
[www.mactechoffshore.com](http://www.mactechoffshore.com)