

# MT30 PORTABLE RACK DRILL

MACTECH PORTABLE MACHINING SOLUTIONS

## Versatile and Powerful Portable Drilling

Mactech's **MT30 Portable Rack Drill** is a versatile and easy to use drill for on-site drilling. The MT30 Rack Drill is ideally suited for applications where quick set-up and powerful drilling is required. An optional hanger bracket allows the drill to be positioned at a set distance from the top of pipe or other structure. An optional magnet attachment allows the MT30 Portable Rack Drill to be easily attached to almost any ferrous surface. The MT30 Portable Rack Drill can be customized with mounting options, tool holders and motors for your applications.

### Features

- Powerful air, hydraulic or electric motors drill quickly through the toughest materials.
- Portable, compact and lightweight design makes drilling in hard to reach spaces easy.
- Optional magnetic attachment base mounts securely to flat or round ferrous surfaces.
- Optional hanger bracket for quick and secure placement and drilling on pipe or structure.
- Wide variety of arbors, tool holders and motors are available.



**MT30 Portable Rack Drill with  
Magnetic Attachment Base**



**MT30 Portable Rack Drill with Hanger Bracket**

### Arbor:

- 1 inch straight quill. Other arbors and tool holders are available.

### Drill Capacity:

- 1-1/2 inch twist drill
- 3 inch annular cutter

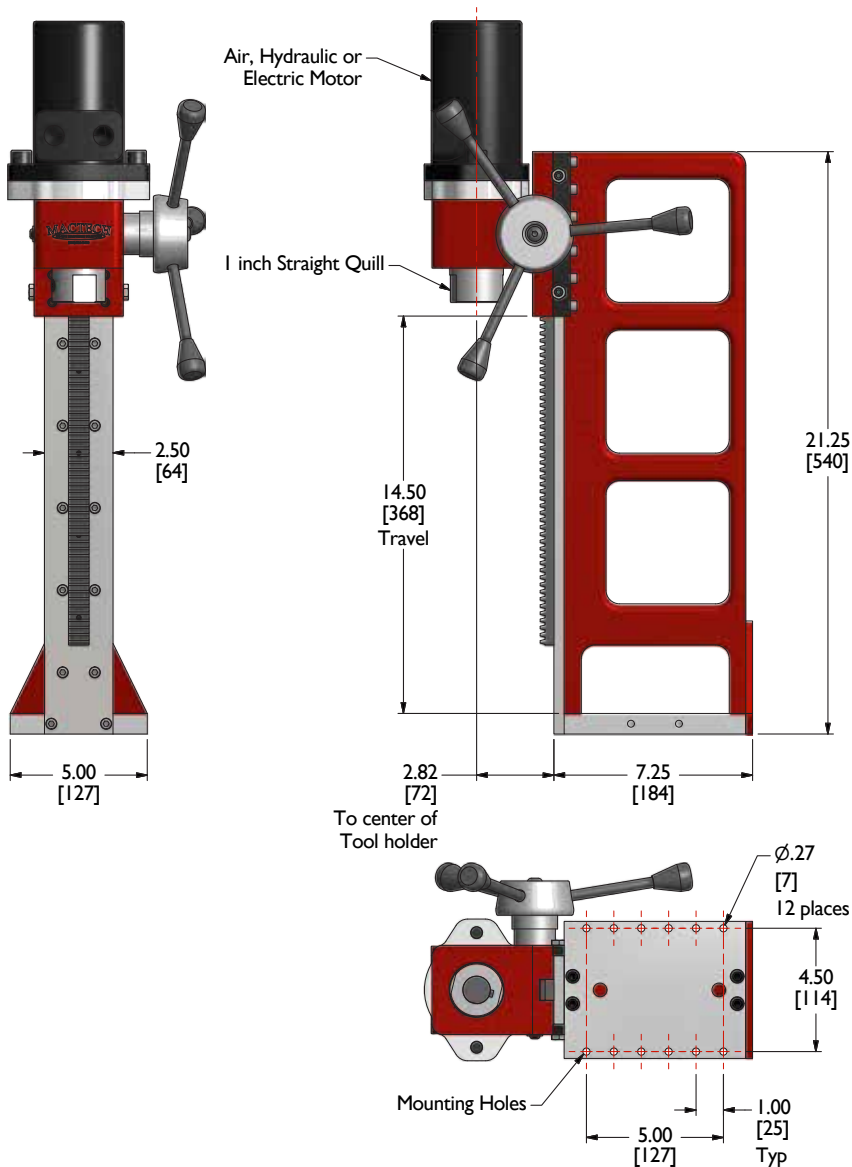
**MACTECH**  
ON-SITE MACHINING SOLUTIONS

Mactech, Inc. • 4079 Pepin Ave. • Red Wing, MN 55066  
Phone: 651-388-7117 • Toll Free: 800-328-1488

[www.mactechonsite.com](http://www.mactechonsite.com)

# MT30 PORTABLE RACK DRILL

MACTECH PORTABLE MACHINING SOLUTIONS

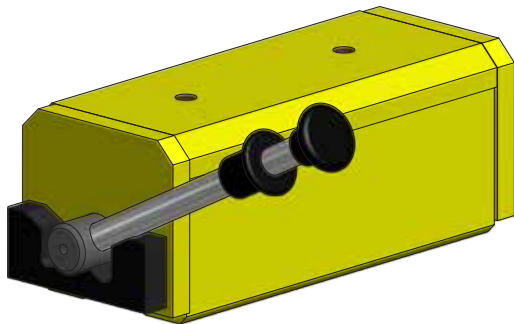


## Performance Specifications

- **Air Motor:** 1700w, 2.3 hp, 89 rpm, 116 ft-lbs torque (157 Nm)
- **Hydraulic Motor:** 9.7 in<sup>3</sup> (159 cc), 232 rpm, 101 ft-lbs torque (137 Nm), @ 10 gpm (38 lpm), 1000 psi continuous pressure (69 bar). Hydraulic power supply is available from Mactech for rent or sale.
- **Electric Motor:** 110v, 20 amp, two-speed, 80 - 570 rpm, 203 ft-lbs torque (275 Nm)

## Weights

- Rack Drill with Hydraulic Motor: 47 lbs. (21 kg)
- Rack Drill with Air Motor: 40 lbs. (18 kg)
- Rack Drill with Electric Motor: 56 lbs. (25 kg)
- Magnetic Attachment Base: 35 lbs. (16 kg)
- Hanger Bracket: 17 lbs. (8 kg)



**Magnetic Attachment Base**

## Magnetic Attachment Base

- Max load, flat surface: 1100 lbs. (499 kg)
- Max load, round surface: 550 lbs. (249 kg)
- Detachment force: 3575 lbs. (1622 kg)

**MACTECH**  
ON-SITE MACHINING SOLUTIONS

Mactech, Inc. • 4079 Pepin Ave. • Red Wing, MN 55066  
Phone: 651-388-7117 • Toll Free: 800-328-1488

[www.mactechonsite.com](http://www.mactechonsite.com)