

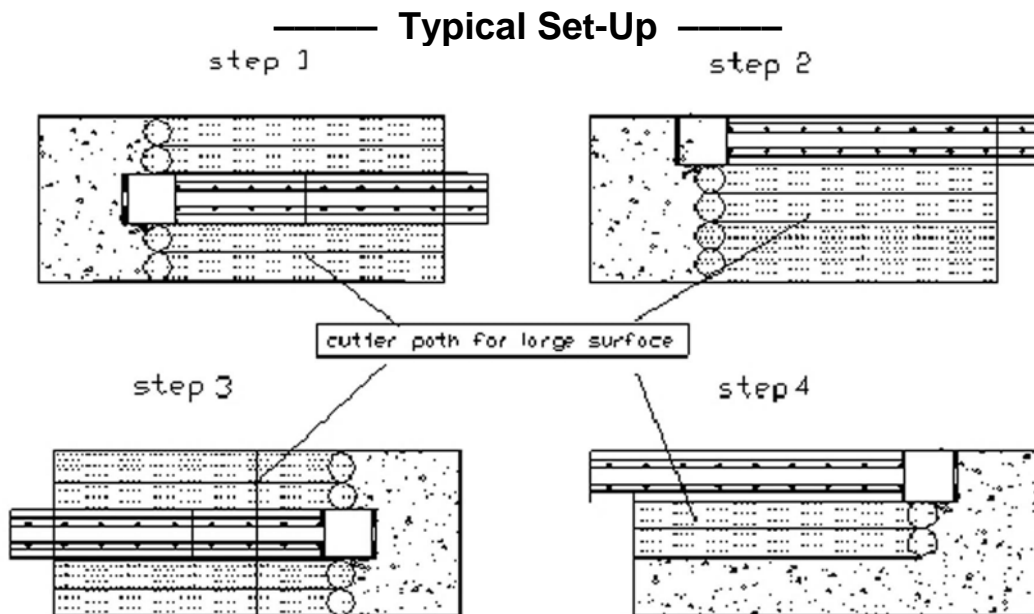
# MACTECH PICTURE FRAME ASSEMBLY

MACTECH PORTABLE MACHINING SOLUTIONS

## Portable Mill Picture Frame



The Mactech Picture Frame Assembly is a modular component tool system that offers users the opportunity to utilize their existing portable mill to mill large surfaces with a minimal set-up time. Typically a surface can be milled flat with only a single set-up provided that the portable mill is long enough to reach across the work piece in a single axis. The remaining area is milled utilizing the picture frame assembly to move the mill in the other axis without having to reestablish the parallel or perpendicular parameters.



The diagram above depicts a typical mill set-up to machine a large flat surface (i.e., motor base, pump base, or platten, etc.). The standard machine would require 4 set-ups to machine the area with a cross feed exceeding the width of the mill base or slide. The cross feed has to be removed from the mill slide and repositioned 180 degrees from the original set-up. This may require repositioning of the mill base to accomplish this operation, which results in less rigidity due to extension of tooling away from the mill base or slide.

**MACTECH**  
ON-SITE MACHINING SOLUTIONS

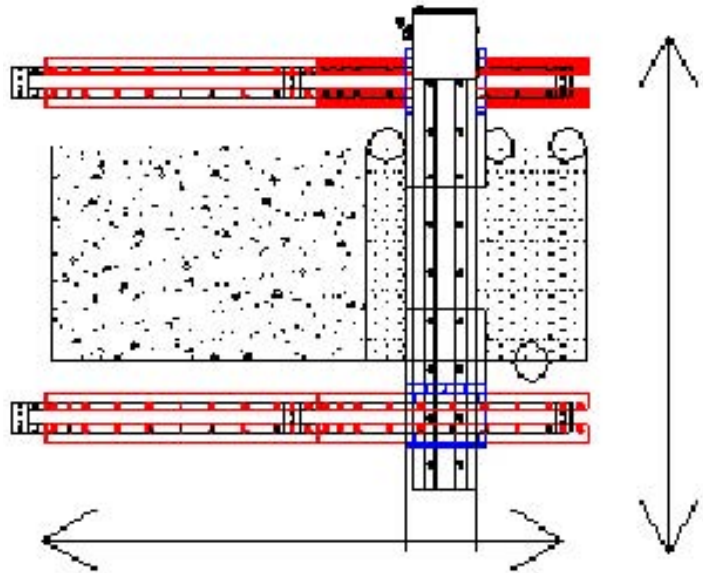
# MACTECH PICTURE FRAME ASSEMBLY

## MACTECH PORTABLE MACHINING SOLUTIONS

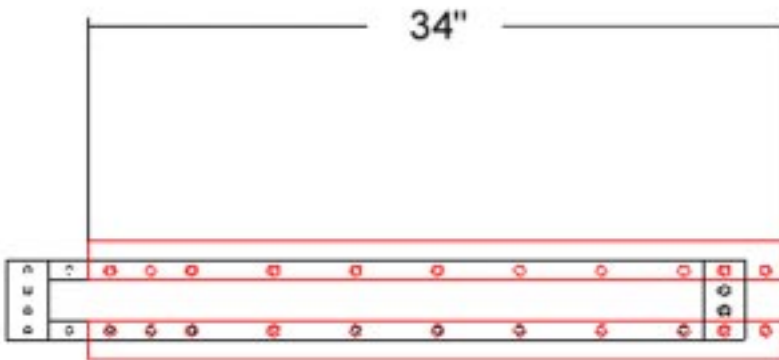
- **Flexibility:** Modular design permits coupling rails to cover virtually any length.
- **Adjustable:** Jacking bolt system allows user to adjust to desired surface.
- **Durable:** Manufactured from precision ground and polished stock.
- **Rigidity:** Clamping system prevents unwanted slide movement during machining.
- **Quality:** Mactech Quality ensures long tool life.

### Picture Frame Assembly:

The diagram to the right depicts the Mactech Picture Frame Assembly fitted to the same mill as the previous example. The picture frames are mounted outside of the area to be machined and leveled to the desired dimensions. The milling cutter is then positioned as close to the mill base or slide as possible. The mill is then fed along its length for the desired distance. The picture frames allow the mill to be positioned for the next pass without loosening the set-up or moving any of the mill cross slides or feeds.



### Modular Slide:



The diagram to the left depicts one modular rail of the picture frame assembly. Couple the rails together to fulfill virtually any length requirement.

